



**Hennepin County Transportation Department**

**ADDENDUM**

**TO PLANS, SPECIFICATIONS AND SPECIAL PROVISIONS FOR  
CSAH 5 INTERSECTION IMPROVEMENTS  
HENNEPIN COUNTY TRANSPORTATION DEPARTMENT**

**(To be opened Tuesday, February 28, 2017 at 2:00 P.M.)**

**ADDENDUM NO. 1**

**CSAH 5 & 152; C.P. 155401**

**NOTICE TO ALL BIDDERS:**

This addendum shall be attached to the Contract Documents and shall be included as part of said Contract Documents. Items herein shall take precedence over any clauses which they modify in the Contract Documents or portions of plans which they modify or supplement.

**PLANS:**

See Attachment A – Revised Plan Sheets for the following modifications:

1. Plan Sheet No. 3 STATEMENT OF ESTIMATED QUANTITIES – **Remove and Replace** with attached Sheet 3R with Last Revision Date 2/10/17.
  - Revised SEQ table line thickness.
2. Plan Sheet No. 4 STATEMENT OF ESTIMATED QUANTITIES – **Remove and Replace** with attached Sheet 4R with Last Revision Date 2/10/17.
  - Revised SEQ table line thickness, added note 5, updated quantities based on sign updates.
3. Plan Sheet No. 41 STAGING AND TRAFFIC CONTROL PLAN – **Remove and Replace** with attached Sheet 41R with Last Revision Date 2/10/17.
  - Removed excess lines on full plan sheet, added driveway notes, added notes B and E, added note about bus stop completion, darkened temporary pavement marking lines on full plan sheet.
4. Plan Sheet No. 42 STAGING AND TRAFFIC CONTROL PLAN – **Remove and Replace** with attached Sheet 42R with Last Revision Date 2/10/17.
  - Added note about bus stop completion, added flasher.
5. Plan Sheet No. 43 STAGING AND TRAFFIC CONTROL PLAN – **Remove and Replace** with attached Sheet 43R with Last Revision Date 2/10/17.
  - Added driveway notes, added notes B, C, D and E, darkened temporary pavement marking lines on full sheet.
6. Plan Sheet No. 73 SIGNING AND STRIPING PLAN – **Remove and Replace** with attached Sheet 73R with Last Revision Date 2/10/17.

- Removed Sign No. C-3, added Sign No. C-14 and C-15, updated number of sign collars, quantities for sign collars and sign plates, added note about Metro Transit signs.

**ELECTRONIC BID FORM**

The following quantities are hereby **REVISED** in the Electronic Bid Form:

<u>Item No.</u>	<u>Item Description</u>	<u>Units</u>	<u>Quantity (Previous Qty)</u>
2564.531	SIGN PANELS TYPE C	SQ FT	<b>172</b> (178)
2564.602	SIGN COLLAR	EACH	<b>26</b> (15)

JJT:jj  
February 13, 2017  
Attachment(s)

***Receipt of this addendum must be acknowledged in accordance with the provisions of 1210 of the specifications.***

Attachment A – Revised Plan Sheets

STATEMENT OF ESTIMATED QUANTITIES

1

**NOTES:**

- (1) PRORATA ITEMS
- (2) FOR REMOVAL OF INPLACE FRANKLIN AVENUE & CEDAR AVENUE SIGNAL SYSTEM.
- (3) FOR REMOVAL OF INPLACE MINNEHAHA/CEDAR AVENUE & 20TH AVENUE SIGNAL SYSTEM.
- (5) TO BE USED AS DIRECTED BY THE ENGINEER. 1402.3 (2) SHALL NOT APPLY.

(P) INDICATED PLAN QUANTITY

TAB	NOTES	ITEM NO.	ITEM DESCRIPTION	UNIT	TOTAL PROJECT QUANTITIES	C.S.A.H. 5/CEDAR AVE/MINNEHAHA AVE INTERSECTION IMPROVEMENTS	
						HENNEPIN COUNTY (CSAH 5)	CITY OF MINNEAPOLIS (CSAH 5)
						QUANTITIES ESTIMATED	QUANTITIES ESTIMATED
		2011.601	AS BUILT	LUMP SUM	1		
	(1)	2021.501	MOBILIZATION	LUMP SUM	1.0	0.91	0.09
	(5)	2102.502	PAVEMENT MARKING REMOVAL	LIN FT	500	500	
		2104.501	REMOVE SEWER PIPE (STORM)	LIN FT	42	27	15
		2104.501	REMOVE CURB & GUTTER	LIN FT	2131	1467	664
	(5)	2104.501	REMOVE STREET CAR TRACKS	LIN FT	100	100	
A		2104.503	REMOVE CONCRETE WALK	SQ FT	14745	9025	5720
A		2104.505	REMOVE PAVEMENT	SQ YD	2588	2472	116
A		2104.505	REMOVE PAVEMENT (SPECIAL)	SQ YD	506	506	
		2104.509	REMOVE LIGHTING UNIT	EACH	6	5	1
		2104.509	REMOVE MANHOLE OR CATCH BASIN	EACH	5	3	2
		2104.509	REMOVE CASTING	EACH	2	2	
		2104.509	REMOVE SIGN	EACH	14	13	1
		2104.509	REMOVE LIGHT FOUNDATION	EACH	7	5	2
A		2104.511	SAWING CONCRETE PAVEMENT (FULL DEPTH)	LIN FT	2535	2031	504
		2104.523	SALVAGE LIGHTING UNIT	EACH	3	3	
		2104.523	SALVAGE SIGN TYPE C	EACH	2	1	1
	(2)	2104.601	SALVAGE SIGNAL SYSTEM A	LUMP SUM	1	1	
	(3)	2104.601	SALVAGE SIGNAL SYSTEM B	LUMP SUM	1	1	
		2104.602	RELOCATE STREET LIGHT	EACH	1		1
D		2105.501	COMMON EXCAVATION (P)	CU YD	299	109	190
D		2105.523	COMMON BORROW (CV) (P)	CU YD	1096	1096	
	(5)	2123.610	STREET SWEEPER (WITH PICKUP BROOM)	hour	50	50	
	(5)	2130.501	WATER	MGAL	30	30	
	(5)	2131.502	CALCIUM CHLORIDE SOLUTION	GALLON	1000	1000	
C		2211.503	AGGREGATE BASE (CV) CLASS 5 (P)	CU YD	556	421	135
B		2301.504	CONCRETE PAVEMENT 7.0"	SQ YD	290	290	
		2301.602	1.0" DOWEL BAR	EACH	57	57	
	(5)	2301.602	DRILL & GROUT REINF BAR (EPOXY COATED)	EACH	80	80	
C		2360.501	TYPE SP 12.5 WEARING COURSE MIX (3,F)	TON	348	242	106
C		2360.502	TYPE SP 12.5 NON WEAR COURSE MIX (3,B)	TON	237	157	80
		2503.541	12" RC PIPE SEWER DESIGN 3006 CLASS V	LIN FT	54	44	10
		2503.602	CONNECT TO EXISTING STORM SEWER	EACH	6	5	1
	(5)	2504.602	ADJUST HYDRANT	EACH	1	1	
		2504.602	ADJUST VALVE BOX	EACH	2	2	
		2504.603	RECONSTRUCT WATER MANHOLE	LIN FT	2	2	
		2506.501	CONSTRUCT DRAINAGE STRUCTURE DESIGN N	LIN FT	16.9	10.6	6.3
		2506.501	CONSTRUCT DRAINAGE STRUCTURE DESIGN 48-4020	LIN FT	13.5	13.5	
		2506.516	CASTING ASSEMBLY	EACH	8	6	2
		2506.522	ADJUST FRAME & RING CASTING	EACH	3	3	
		2506.602	CONNECT INTO EXISTING DRAINAGE STRUCTURE	EACH	1		1
B		2521.501	4" CONCRETE WALK	SQ FT	10186	7917	2269
R		2521.501	4" CONCRETE WALK SPECIAL	SQ FT	563	563	
B		2521.501	6" CONCRETE WALK	SQ FT	1987	1748	239

REVISION		
DATE	DESCRIPTION	APPROVED BY
2-10-2017	1.) DARKENED TABLE HEADING	JDP

1



I HEREBY CERTIFY THAT THIS PLAN WAS PREPARED BY ME OR UNDER MY DIRECT SUPERVISION AND THAT I AM A DULY LICENSED PROFESSIONAL ENGINEER UNDER THE LAWS OF THE STATE OF MINNESOTA.

JOSHUA POTTER, PROFESSIONAL ENGINEER

53094      01/25/2017  
 LICENSE NO.      DATE

**DESIGN BY:** K. MORTER  
**CAD BY:** K. MORTER  
**CHECKED BY:** J. POTTER  
**LAST REVISION:** 2/10/2017

STATEMENT OF ESTIMATED QUANTITIES

C.S.A.H. 5 / HENNEPIN COUNTY PROJECT 155401  
FRANKLIN AVENUE/ CEDAR AVENUE/ MINNEHAHA AVENUE  
INTERSECTION IMPROVEMENTS

SHEET

3R  
120

STATEMENT OF ESTIMATED QUANTITIES

1

NOTES:

- (1) PRORATA ITEMS
- (4) SEE SIGNING AND STRIPING PLAN
- (5) TO BE USED AS DIRECTED BY THE ENGINEER. 1903 SHALL NOT APPLY.
- (6) FOR FURNISH & INSALL OF FRANKLIN AVENUE & CEDAR AVENUE SIGNAL SYSTEM.
- (7) FOR FURNISH & INSTALL OF MINNEHAHA/CEDAR AVENUE & 20TH AVENUE SIGNAL SYSTEM.
- (8) THE CONTRACTOR SHALL COORDINATE PURCHASE OF ALL SIGN COLLARS WITH CITY OF MINNEAPOLIS. ALL SIGN COLLARS SHALL BE INSTALLED BY CONTRACTOR AS DIRECTED BY ENGINEER.
- (9) FOR CITY OF MINNEAPOLIS SIGNAL INTECONNECTION SYSTEM (QUANTITY INCLUDES 565 LF OF 3" NMC, 2960 LF OF 24 FIBER SINGLE MODE FO CABLE, 1 FIBER OPTIC HUB CABINET AND FOUNDATION, AND 6 FIBER OPTIC HANDHOLES)

REVISION		
DATE	DESCRIPTION	APPROVED BY
2-10-2017	1.) DARKENED TABLE HEADING 2.) ADDED NOTE 5 3.) UPDATED QUANTITIES BASED ON SIGN UPDATES	JDP

1

TAB	NOTES	ITEM NO.	ITEM DESCRIPTION	UNIT	TOTAL PROJECT QUANTITIES	C.S.A.H. 5/CEDAR AVE/MINNEHAHA AVE INTERSECTION IMPROVEMENTS	
						HENNEPIN COUNTY (CSAH 5)	CITY OF MINNEAPOLIS (CSAH 5)
						QUANTITIES ESTIMATED	QUANTITIES ESTIMATED
B		2531.501	CONCRETE CURB & GUTTER DESIGN B424	LIN FT	543	543	
B		2531.501	CONCRETE CURB & GUTTER DESIGN B612	LIN FT	282	282	
B		2531.501	CONCRETE CURB & GUTTER DESIGN B624	LIN FT	1220	847	373
B		2531.507	8" CONCRETE DRIVEWAY PAVEMENT	SQ YD	69	69	
B		2531.603	CONCRETE CURB DESIGN V	LIN FT	71		71
B		2531.618	TRUNCATED DOMES	SQ FT	185	161	24
	(5)	2533.507	PORTABLE PRECAST CONC BARRIER DES 8337	LIN FT	300	300	
	(5)	2533.508	RELOCATE PORT PRECAST CONC BAR DES 8337	LIN FT	300	300	
		2545.511	LIGHTING UNIT TYPE SPECIAL	EACH	1		1
		2545.515	LIGHT FOUNDATION DESIGN M	EACH	2		2
		2545.523	2" NON-METALLIC CONDUIT	LIN FT	410	250	160
		2545.523	2" NON-METALLIC CONDUIT (DIRECTIONAL BORE)	LIN FT	355	355	
		2545.531	UNDERGROUND WIRE 1 COND NO 4	LIN FT	3510	2415	1095
		2545.531	UNDERGROUND WIRE 1 COND NO 8	LIN FT	1170	805	365
		2545.553	HANDHOLE	EACH	10	8	2
	(1)	2563.601	TRAFFIC CONTROL	LUMP SUM	1.0	0.91	0.09
	(5)	2563.602	RAISED PAVEMENT MARKER TEMPORARY	EACH	100	100	
		2563.602	TUBE DELINEATOR	EACH	10	10	
	(5)	2563.613	PORTABLE CHANGEABLE MESSAGE SIGN	UNIT DAY	60	60	
	(5)	2563.618	CONSTRUCTION SIGN-SPECIAL	SQ FT	100	100	
	(4)	2564.531	SIGN PANELS TYPE C	SQ FT	172	144	28
	(4)	2564.537	INSTALL SIGN TYPE C	EACH	2	2	
	(8)	2564.602	SIGN COLLAR	EACH	26	22	4
	(6)	2565.511	TRAFFIC CONTROL SIGNAL SYSTEM A	SIG SYS	1.00	1.00	
	(7)	2565.511	TRAFFIC CONTROL SIGNAL SYSTEM B	SIG SYS	1.00	1.00	
	(9)	2565.514	TRAFFIC CONTROL INTERCONNECT SYSTEM A	LUMP SUM	1.00	1.00	
		2573.530	STORM DRAIN INLET PROTECTION	EACH	21	13	8
C		2574.508	FERTILIZER TYPE 3	POUND	84	76	8
D		2574.525	BOULEVARD TOPSOIL BORROW	CU YD	209	196	13
C		2575.505	SODDING TYPE SALT TOLERANT	SQ YD	1837	1670	167
	(5)	2581.501	REMOVABLE PREFORMED PAVEMENT MARKING TAPE	LIN FT	1000	1000	
	(4)	2582.501	PAVEMENT MESSAGE PREFORM THERMOPLASTIC GROUND IN	SQ FT	45	45	
	(4)	2582.502	4" SOLID LINE PAINT	LIN FT	3750	3600	150
	(4)	2582.502	6" SOLID LINE PAINT	LIN FT	300	300	
	(4)	2582.502	12" SOLID LINE PAINT	LIN FT	400	400	
	(4)	2582.502	24" SOLID LINE PAINT	LIN FT	400	380	20
	(4)	2582.502	4" BROKEN LINE PAINT	LIN FT	900	900	
	(4)	2582.502	4" DOUBLE SOLID LINE PAINT	LIN FT	1700	1700	
	(4)	2582.503	CROSSWALK PREFORM THERMOPLASTIC GROUND IN	SQ FT	180	180	
<b>BID ALTERNATE 1</b>							
	(6)	2565.511	TRAFFIC CONTROL SIGNAL SYSTEM A-1	SIG SYS	1.00	1.00	
	(7)	2565.511	TRAFFIC CONTROL SIGNAL SYSTEM B-1	SIG SYS	1.00	1.00	
<b>BID ALTERNATE 2</b>							
	(6)	2565.511	TRAFFIC CONTROL SIGNAL SYSTEM A-2	SIG SYS	1.00	1.00	
	(7)	2565.511	TRAFFIC CONTROL SIGNAL SYSTEM B-2	SIG SYS	1.00	1.00	
	(9)	2565.514	TRAFFIC CONTROL INTERCONNECT SYSTEM A-2	LUMP SUM	1.00	1.00	



I HEREBY CERTIFY THAT THIS PLAN WAS PREPARED BY ME OR UNDER MY DIRECT SUPERVISION AND THAT I AM A DULY LICENSED PROFESSIONAL ENGINEER UNDER THE LAWS OF THE STATE OF MINNESOTA.

*Joshua Potter*  
 JOSHUA POTTER, PROFESSIONAL ENGINEER  
 53094 LICENSE NO. 01/25/2017 DATE

DESIGN BY: **K. MORTER**  
 CAD BY: **K. MORTER**  
 CHECKED BY: **J. POTTER**  
 LAST REVISION: **2/10/2017**

STATEMENT OF ESTIMATED QUANTITIES  
 C.S.A.H. 5 / HENNEPIN COUNTY PROJECT 155401  
 FRANKLIN AVENUE/ CEDAR AVENUE/ MINNEHAHA AVENUE  
 INTERSECTION IMPROVEMENTS

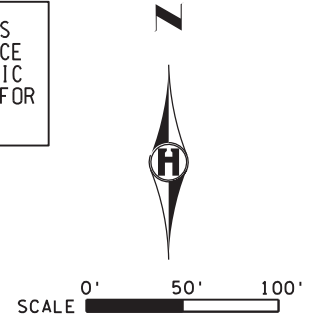
SHEET  
 4R  
 120

**LEGEND**

	PERMANENT CONSTRUCTION
	CONSTRUCTION UNDER TRAFFIC
	REFLECTORIZED PLASTIC DRUM (25' SPACING UNLESS NOTED OTHERWISE)
	TYPE III BARRICADE
	TYPE "C" SIGN
	DIRECTION OF TRAFFIC LANE
	FLASHER
	STORM DRAIN INLET PROTECTION
	IMPACT ATTENUATOR - 30 MPH (INCIDENTAL)
	PORTABLE CONCRETE MEDIAN BARRIER DESIGN 8337
	CATCH BASIN
	STORM SEWER
	STORM MANHOLE

**GENERAL NOTES:**  
 SEE DETOUR PLANS FOR PROPOSED DETOUR SIGNING  
 TEMPORARY STABILIZATION SHALL BE CONDUCTED USING RAPID STABILIZATION METHOD 3 IN ACCORDANCE WITH THE NPDES PERMIT AS NEEDED UNTIL PERMANENT SODDING IS PLACED (INCIDENTAL).

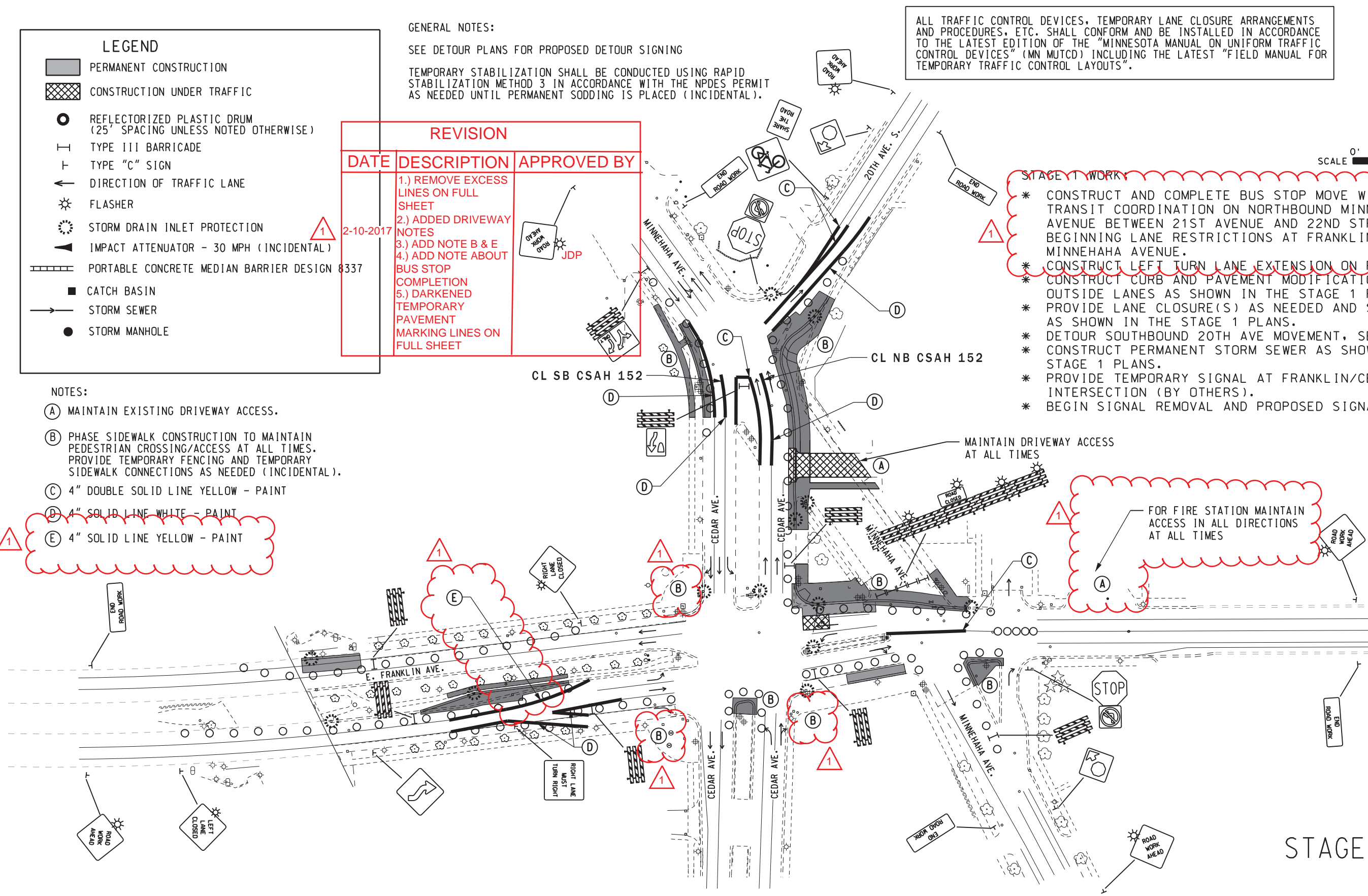
ALL TRAFFIC CONTROL DEVICES, TEMPORARY LANE CLOSURE ARRANGEMENTS AND PROCEDURES, ETC. SHALL CONFORM AND BE INSTALLED IN ACCORDANCE TO THE LATEST EDITION OF THE "MINNESOTA MANUAL ON UNIFORM TRAFFIC CONTROL DEVICES" (MN MUTCD) INCLUDING THE LATEST "FIELD MANUAL FOR TEMPORARY TRAFFIC CONTROL LAYOUTS".



REVISION		
DATE	DESCRIPTION	APPROVED BY
2-10-2017	1.) REMOVE EXCESS LINES ON FULL SHEET 2.) ADDED DRIVEWAY NOTES 3.) ADD NOTE B & E 4.) ADD NOTE ABOUT BUS STOP COMPLETION 5.) DARKENED TEMPORARY PAVEMENT MARKING LINES ON FULL SHEET	JDP

- NOTES:**
- (A) MAINTAIN EXISTING DRIVEWAY ACCESS.
  - (B) PHASE SIDEWALK CONSTRUCTION TO MAINTAIN PEDESTRIAN CROSSING/ACCESS AT ALL TIMES. PROVIDE TEMPORARY FENCING AND TEMPORARY SIDEWALK CONNECTIONS AS NEEDED (INCIDENTAL).
  - (C) 4" DOUBLE SOLID LINE YELLOW - PAINT
  - (D) 4" SOLID LINE WHITE - PAINT
  - (E) 4" SOLID LINE YELLOW - PAINT

- STAGE 1 WORK:**
- \* CONSTRUCT AND COMPLETE BUS STOP MOVE WITH METRO TRANSIT COORDINATION ON NORTHBOUND MINNEHAHA AVENUE BETWEEN 21ST AVENUE AND 22ND STREET BEFORE BEGINNING LANE RESTRICTIONS AT FRANKLIN AVENUE AND MINNEHAHA AVENUE.
  - \* CONSTRUCT LEFT TURN LANE EXTENSION ON FRANKLIN AVE.
  - \* CONSTRUCT CURB AND PAVEMENT MODIFICATIONS ON THE OUTSIDE LANES AS SHOWN IN THE STAGE 1 PLANS.
  - \* PROVIDE LANE CLOSURE(S) AS NEEDED AND SHIFT TRAFFIC AS SHOWN IN THE STAGE 1 PLANS.
  - \* DETOUR SOUTHBOUND 20TH AVE MOVEMENT, SEE DETOUR PLANS.
  - \* CONSTRUCT PERMANENT STORM SEWER AS SHOWN IN THE STAGE 1 PLANS.
  - \* PROVIDE TEMPORARY SIGNAL AT FRANKLIN/CEDAR INTERSECTION (BY OTHERS).
  - \* BEGIN SIGNAL REMOVAL AND PROPOSED SIGNAL WORK.



STAGE 1



I HEREBY CERTIFY THAT THIS PLAN WAS PREPARED BY ME OR UNDER MY DIRECT SUPERVISION AND THAT I AM A DULY LICENSED PROFESSIONAL ENGINEER UNDER THE LAWS OF THE STATE OF MINNESOTA.

*Joshua Potter*  
 JOSHUA POTTER, PROFESSIONAL ENGINEER

53094      01/25/2017  
 LICENSE NO.      DATE

**DESIGN BY:** K. MORTER  
**CAD BY:** K. MORTER  
**CHECKED BY:** J. POTTER  
**LAST REVISION:** 2/10/2017

**STAGING AND TRAFFIC CONTROL PLAN**  
 C.S.A.H. 5 / HENNEPIN COUNTY PROJECT 155401  
 FRANKLIN AVENUE/ CEDAR AVENUE/ MINNEHAHA AVENUE  
 INTERSECTION IMPROVEMENTS

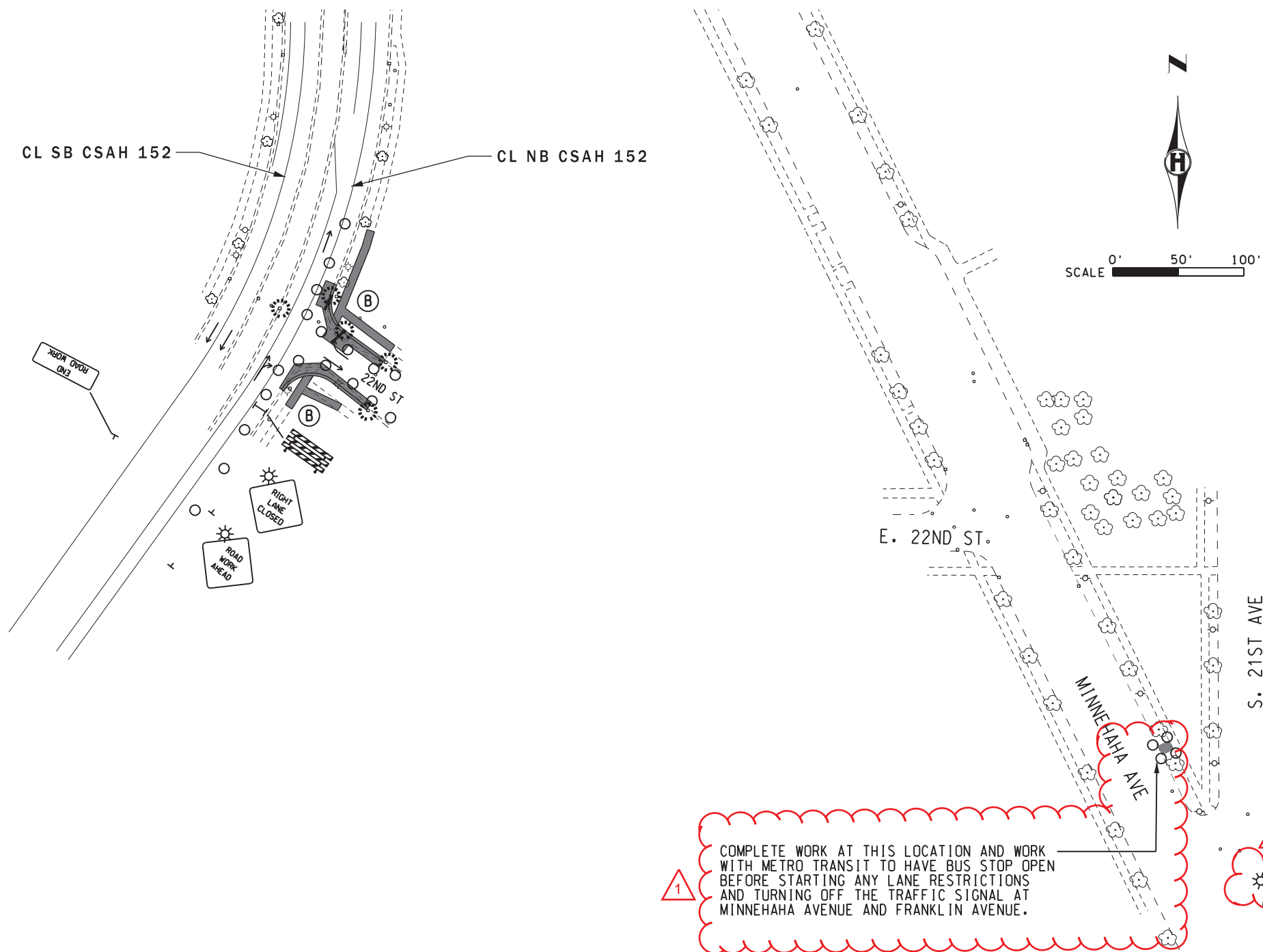
**SHEET**  
 41R  
 120

NOTES:

- (A) MAINTAIN EXISTING DRIVEWAY ACCESS.
- (B) PHASE SIDEWALK CONSTRUCTION TO MAINTAIN PEDESTRIAN CROSSING/ACCESS AT ALL TIMES. PROVIDE TEMPORARY FENCING AND TEMPORARY SIDEWALK CONNECTIONS AS NEEDED (INCIDENTAL).
- (C) 4" DOUBLE SOLID LINE YELLOW - PAINT
- (D) 4" SOLID LINE WHITE - PAINT

REVISION		
DATE	DESCRIPTION	APPROVED BY
2-10-2017	1.) ADDED NOTE ABOUT BUS STOP COMPLETION 2.) ADDED FLASHER	JDP

1



ALL TRAFFIC CONTROL DEVICES, TEMPORARY LANE CLOSURE ARRANGEMENTS AND PROCEDURES, ETC. SHALL CONFORM AND BE INSTALLED IN ACCORDANCE TO THE LATEST EDITION OF THE "MINNESOTA MANUAL ON UNIFORM TRAFFIC CONTROL DEVICES" (MN MUTCD) INCLUDING THE LATEST "FIELD MANUAL FOR TEMPORARY TRAFFIC CONTROL LAYOUTS".

STAGE 1



I HEREBY CERTIFY THAT THIS PLAN WAS PREPARED BY ME OR UNDER MY DIRECT SUPERVISION AND THAT I AM A DULY LICENSED PROFESSIONAL ENGINEER UNDER THE LAWS OF THE STATE OF MINNESOTA.

*Joshua Potter*  
 JOSHUA POTTER, PROFESSIONAL ENGINEER

53094      01/25/2017  
 LICENSE NO.      DATE

DESIGN BY: K. MORTER  
 CAD BY: K. MORTER  
 CHECKED BY: J. POTTER  
 LAST REVISION: 2/10/2017

STAGING AND TRAFFIC CONTROL PLAN

C.S.A.H. 5 / HENNEPIN COUNTY PROJECT 155401  
 FRANKLIN AVENUE/ CEDAR AVENUE/ MINNEHAHA AVENUE  
 INTERSECTION IMPROVEMENTS

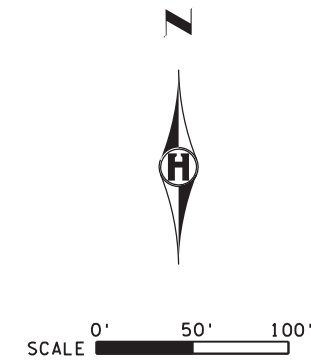
SHEET 42R / 120

NOTES:

- (A) MAINTAIN EXISTING DRIVEWAY ACCESS.
- (B) PHASE SIDEWALK CONSTRUCTION TO MAINTAIN PEDESTRIAN CROSSING/ACCESS AT ALL TIMES. PROVIDE TEMPORARY FENCING AND TEMPORARY SIDEWALK CONNECTIONS AS NEEDED (INCIDENTAL).
- (C) 4" DOUBLE SOLID LINE YELLOW - PAINT
- (D) 4" SOLID LINE WHITE - PAINT
- (E) 4" SOLID LINE YELLOW - PAINT

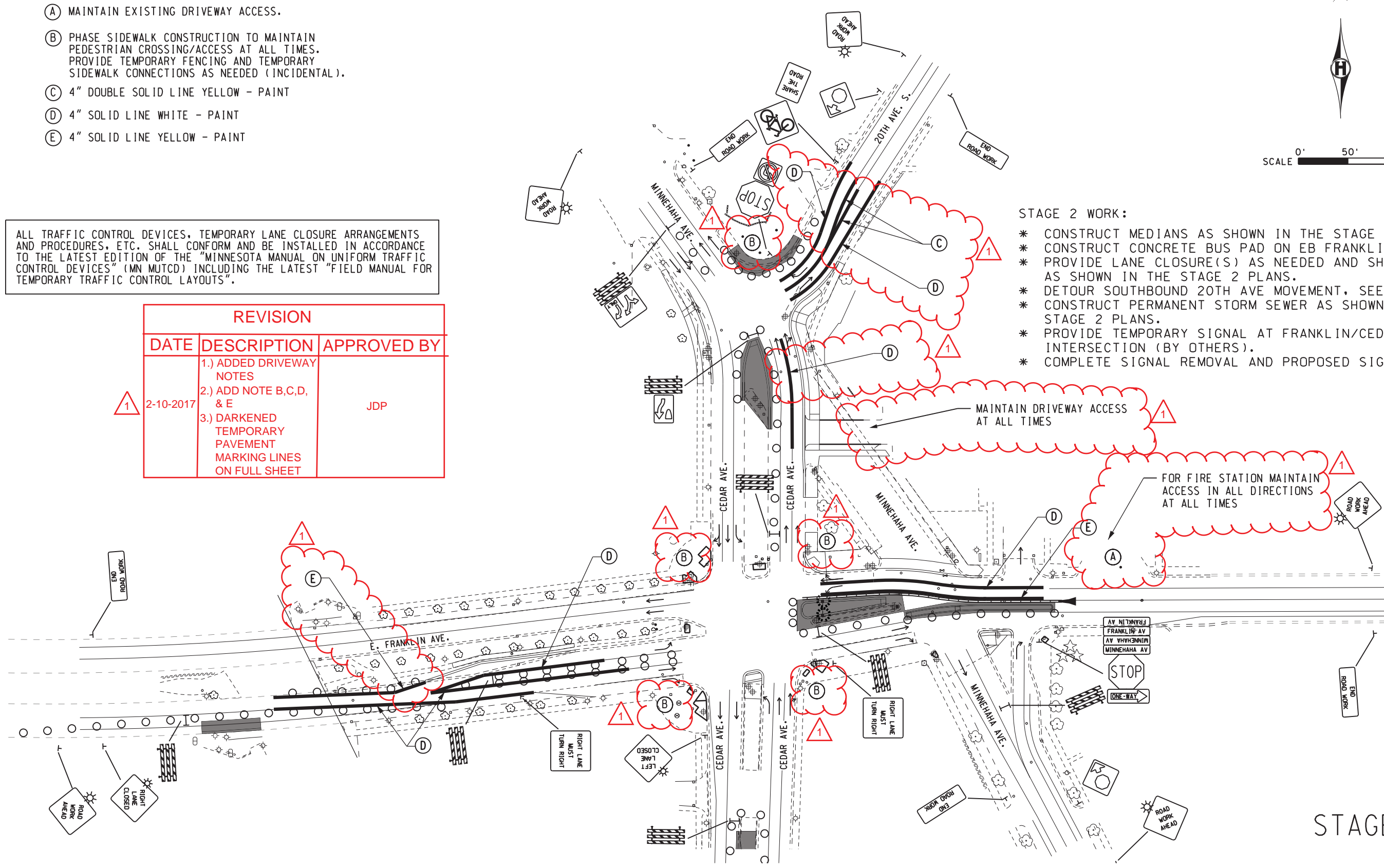
ALL TRAFFIC CONTROL DEVICES, TEMPORARY LANE CLOSURE ARRANGEMENTS AND PROCEDURES, ETC. SHALL CONFORM AND BE INSTALLED IN ACCORDANCE TO THE LATEST EDITION OF THE "MINNESOTA MANUAL ON UNIFORM TRAFFIC CONTROL DEVICES" (MN MUTCD) INCLUDING THE LATEST "FIELD MANUAL FOR TEMPORARY TRAFFIC CONTROL LAYOUTS".

REVISION		
DATE	DESCRIPTION	APPROVED BY
2-10-2017	1.) ADDED DRIVEWAY NOTES 2.) ADD NOTE B,C,D, & E 3.) DARKENED TEMPORARY PAVEMENT MARKING LINES ON FULL SHEET	JDP



STAGE 2 WORK:

- \* CONSTRUCT MEDIANS AS SHOWN IN THE STAGE 2 PLANS.
- \* CONSTRUCT CONCRETE BUS PAD ON EB FRANKLIN AVE.
- \* PROVIDE LANE CLOSURE(S) AS NEEDED AND SHIFT TRAFFIC AS SHOWN IN THE STAGE 2 PLANS.
- \* DETOUR SOUTHBOUND 20TH AVE MOVEMENT. SEE DETOUR PLANS.
- \* CONSTRUCT PERMANENT STORM SEWER AS SHOWN IN THE STAGE 2 PLANS.
- \* PROVIDE TEMPORARY SIGNAL AT FRANKLIN/CEDAR INTERSECTION (BY OTHERS).
- \* COMPLETE SIGNAL REMOVAL AND PROPOSED SIGNAL WORK.



STAGE 2



I HEREBY CERTIFY THAT THIS PLAN WAS PREPARED BY ME OR UNDER MY DIRECT SUPERVISION AND THAT I AM A DULY LICENSED PROFESSIONAL ENGINEER UNDER THE LAWS OF THE STATE OF MINNESOTA.

*Joshua Potter*  
 JOSHUA POTTER, PROFESSIONAL ENGINEER

53094      01/25/2017  
 LICENSE NO.      DATE

DESIGN BY: K. MORTER  
 CAD BY: K. MORTER  
 CHECKED BY: J. POTTER  
 LAST REVISION: 2/10/2017

STAGING AND TRAFFIC CONTROL PLAN

C.S.A.H. 5 / HENNEPIN COUNTY PROJECT 155401  
 FRANKLIN AVENUE/ CEDAR AVENUE/ MINNEHAHA AVENUE  
 INTERSECTION IMPROVEMENTS

SHEET

43R  
 120



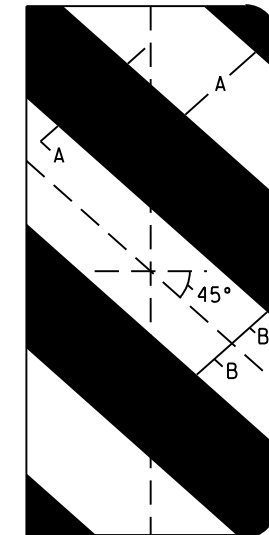
**GENERAL INFORMATION**

THE ENGINEER'S INVOLVEMENT IN THE APPLICATION OF THE MATERIAL SHALL BE LIMITED TO FIELD CONSULTATION AND INSPECTION. THE CONTRACTOR WILL PLACE NECESSARY "SPOTTING" AT APPROPRIATE POINTS TO PROVIDE HORIZONTAL CONTROL FOR STRIPING AND TO DETERMINE NECESSARY STARTING AND CUTOFF POINTS. LONGITUDINAL JOINTS, PAVEMENT EDGES AND EXISTING MARKINGS MAY SERVE AS HORIZONTAL CONTROL WHEN SO DIRECTED.

EDGE LINES AND LANE LINES ARE TO BE BROKEN ONLY AT INTERSECTIONS WITH PUBLIC ROADS AND AT PRIVATE ENTRANCES IF THEY ARE CONTROLLED BY A YIELD SIGN, STOP SIGN OR TRAFFIC SIGNAL. THE BREAK POINT IS TO BE AT THE START OF THE RADIUS FOR THE INTERSECTION OR AT MARKED STOP LINES OR CROSSWALK.

INTERSECTION MARKINGS, LEGENDS, AND SYMBOLS MAY REQUIRE USE OF WIDER CUTTING HEADS TO REDUCE THE NUMBER OF RIDGES FORMED BY MULTIPLE PASSES WITH THE CUTTING HEAD. THE HEIGHT OF THE RIDGES SHOULD BE LESS THAN 20% OF THE GROOVE DEPTH. SMALLER EQUIPMENT MAY BE REQUIRED TO ACHIEVE A GROOVE AT THE RECOMMENDED DEPTH WHEN WORKING NEAR OBSTACLES SUCH AS CURBS OR MEDIANS.

**REAR DELINEATION FOR R4-7  
(NO SCALE)**



REAR DELINEATION FOR R4-7 DIMENSIONS			
SIZE	12" x 30"	15" x 36"	18" x 48"
MOUNT ON	24" x 30"	30" x 36"	36" x 48"
RADIUS	1.50"	1.88"	2.25"
A	5.00"	6.00"	6.00"
B	2.50"	3.00"	3.00"

COLOR: YELLOW & BLACK DG3 SIGN SHEETING ONLY.

**F&I SIGN PANELS TYPE C**

SIGN NO	QTY	POSTS NO.	SIGN COLLAR (1)	MTG HT (2) FEET	SIGN PANEL			CODE NO	PANEL LEGEND (3) (4)
					SIZE	AREA	TOTAL AREA		
					INCH	SQ FT	SQ FT		
C-1	1	1	1	7	30 x 30	6.3	6.3	R1-1	STOP
	2				30 x 6	1.3	2.5		MINNEHAHA AV
	2				30 x 6	1.3	2.5		E FRANKLIN AV
C-2	5	1	5	7	36 x 12	3.0	3.0	R6-1R	ONE WAY RIGHT
C-3	2	1	1	7	30 x 30	6.3	6.3	R3-7L	LEFT LANE MUST TURN LEFT
C-4	1	1	1	7	36 x 30	7.5	7.5	R6-1R	ONE WAY RIGHT
C-5	1	1	1	7	30 x 30	6.3	6.3	W3-1	STOP AHEAD
C-6	1	2	2	7	30 x 30	6.3	6.3	W12-1	DOUBLE ARROW
C-7	1	1	1	7	54 x 30	11.3	11.3	R3-8ABRA	LANE USE
C-8	1	1	1	7	36 x 30	7.5	7.5	R3-8AF	LANE USE
C-9	1	1	1	7	24 x 18	3.0	3.0	R3-17	BIKE LANE
C-9	8	1	8	4	24 x 30	5.0	40.0	R4-7	KEEP RIGHT
C-10	1	1	1	7	18 x 18	2.3	18.0	X4-2	HAZARD MARKER (P-2)
C-11	1	1	1	7	36 x 36	9.0	9.0	W9-2L	LANE ENDS MERGE LEFT
C-12	1	1	1	7	36 x 36	9.0	9.0	W4-2R	LANE TRANSITION RIGHT
C-13	1	1	1	7	30 x 30	6.3	6.3	R3-7R	RIGHT LANE MUST TURN RIGHT
C-13	1	1	1	7	24 x 12	2.0	2.0	M4-5A	TO
C-13	1				24 x 12	2.0	2.0	M3-2A	EAST
C-13	1				24 x 24	4.0	4.0	M1-1	INTERSTATE 94
C-13	1				21 x 15	2.2	2.2	M6-3A	ARROW
C-14	1	1	1	7					METRO TRANSIT BUS STOP
C-15	1	1	1	7					METRO TRANSIT BUS STOP
		TOTAL	26				172		

**GENERAL NOTES:**

- (1) THE CONTRACTOR SHALL PURCHASE FROM THE CITY OF MINNEAPOLIS.
- (2) MOUNTING HEIGHT TO BOTTOM EDGE OF LOWEST SIGN.
- (3) ALL SIGNING SHALL USE DG3 SHEETING.
- (4) ALL "METRO TRANSIT BUS STOP" SIGN PANELS FURNISHED AND INSTALLED BY METRO TRANSIT. SIGN COLLAR AND POST LOCATIONS SHALL BE COORDINATED WITH METRO TRANSIT.

REVISION		
DATE	DESCRIPTION	APPROVED BY
2-10-2017	1.) REMOVED SIGN NO C-3 2.) ADDED SIGN NO C-14 AND C-15 3.) UPDATED NUMBER OF SIGN COLLARS 4.) QUANTITIES FOR SIGN COLLARS AND SIGN PLATES 5.) ADDED NOTE ABOUT METRO TRANSIT SIGNS	JDP



I HEREBY CERTIFY THAT THIS PLAN WAS PREPARED BY ME OR UNDER MY DIRECT SUPERVISION AND THAT I AM A DULY LICENSED PROFESSIONAL ENGINEER UNDER THE LAWS OF THE STATE OF MINNESOTA.

*Joshua Potter*  
 JOSHUA POTTER, PROFESSIONAL ENGINEER

53094      01/25/2017  
 LICENSE NO.      DATE

DESIGN BY: K. MORTER  
 CAD BY: K. MORTER  
 CHECKED BY: J. POTTER  
 LAST REVISION: 2 / 10 / 2017

SIGNING AND STRIPING PLAN  
 C.S.A.H. 5 / HENNEPIN COUNTY PROJECT 155401  
 FRANKLIN AVENUE/ CEDAR AVENUE/ MINNEHAHA AVENUE  
 INTERSECTION IMPROVEMENTS

SHEET  
 73R  
 120