



Hennepin County Transportation Department

ADDENDUM

**TO PLANS, SPECIFICATIONS AND SPECIAL PROVISIONS FOR
BRIDGE REPLACEMENT, GRADING, AND BITUMINOUS PAVEMENT
HENNEPIN COUNTY TRANSPORTATION DEPARTMENT**

(To be opened Tuesday, September 25th, 2018 at 2:00 P.M.)

ADDENDUM NO. 1

**CR 202 ; C.P.0408
S. P. 027-596-009
Minn. Proj. BROS 2718 (125)**

NOTICE TO ALL BIDDERS:

This Addendum shall be attached to the Contract Documents and shall be included as part of said Contract Documents. Items herein shall take precedence over any clauses which they modify in the Contract Documents or portions of plans which they modify or supplement.

PLANS

See Attachment A - Revised Plan Sheets for the following modifications:

1. Plan Sheet No. 3 STATEMENT OF ESTIMATED QUANTITIES – **Remove and Replace** with attached Sheet R3.1.
2. Plan Sheet No. TC4 TRAFFIC CONTROL DETAIL SHEET – **Remove and Replace** with attached Sheet RTC4.1.
3. Plan Sheet No. TC5 TRAFFIC CONTROL DETAIL SHEET – **Remove and Replace** with attached Sheet RTC5.1.
4. Plan Sheet No. TC6 TRAFFIC CONTROL DETAIL SHEET – **Remove and Replace** with attached Sheet RTC6.1.
5. Plan Sheet No. B4 WEST ABUTMENT PLAN AND ELEVATION – **Remove and Replace** with attached Sheet RB4.1.
6. Plan Sheet No. B5 EAST ABUTMENT PLAN AND ELEVATION – **Remove and Replace** with attached Sheet RB5.1.

ELECTRONIC BID FORM

The following quantities are hereby **REMOVED** in the Electronic Bid Form:

<u>Item No.</u>	<u>Item Description</u>	<u>Units</u>	<u>Qty</u>
2563.602/01100	PORTABLE CHANGEABLE MESSAGE SIGN	EACH	2

The following quantities are hereby **ADDED** in the Electronic Bid Form:

<u>Item No.</u>	<u>Item Description</u>	<u>Units</u>	<u>Qty</u>
2563.613/01100	PORTABLE CHANGEABLE MESSAGE SIGN	UNIT DAY	40

The following quantities are hereby **REVISED** in the Electronic Bid Form:

<u>Item No.</u>	<u>Item Description</u>	<u>Units</u>	<u>Quantity(Previous Qty)</u>
2533.503/03010	PORTABLE PRECAST CONC BARRIER DES 8337	LIN FT	50 (100)

NDH:jj
September 17, 2018
Attachment(s)

Receipt of this addendum must be acknowledged in accordance with the provisions of 1210 of the specifications.

Addendum #1
CR 202; C.P. 0408
S.A.P. 027-596-009
Minn Proj BROS 2718 (125)

Attachment A – Revised Plan Sheets

NOTES

- (1) AVERAGE EXISTING BITUMINOUS THICKNESS OF 4".
- (2) BITUMINOUS MATERIAL FOR TACK COAT IS INCIDENTAL.
- (3) SPECIAL FINISH TO BE APPLIED. SEE SPECIAL PROVISIONS.
- (4) SEE CROSS SECTIONS FOR CULVERT LOCATIONS
- (5) SEE BRIDGE PLANS
- (6) BIT. CURB INCIDENTAL TO GUARD RAIL INSTALLATION APPROX. 75 LF
- (7) WATERPROOF REINFORCING MEMBRANE. INCIDENTAL TO GLUED LAMINATED DECK SEE SHEET B2 AND SPECIAL PROVISIONS.
- (8) UTILIZED FOR ROOT-RAP SEE SPECIAL PROVISION SB-13.
- (9) SHALL BE PLACED UNDERNEATH ALL RANDOM RIPRAP CLASS 4
- (P) PLAN QUANTITY

1 09/11/18 REVISED QUANTITY AND NOTE

NOTES	TAB	SHEET NO.	ITEM NO.	ITEM DESCRIPTION	UNIT	TOTAL PROJECT QUANTITY	BRIDGE HENNEPIN COUNTY FEDERAL PARTICIPATING S.P. 027-596-009	APPROACH HENNEPIN COUNTY FEDERAL PARTICIPATING S.P. 027-596-009	APPROACH HENNEPIN COUNTY NON-PARTICIPATING
							QUANTITY	QUANTITY	QUANTITY
			2021.501	MOBILIZATION	LUMP SUM	1	0.9		0.1
			2031.502	FIELD OFFICE TYPE D	EACH	1	0.9		0.1
			2101.501	CLEARING & GRUBBING	LUMP SUM	1		1	
		SS1	2104.502	REMOVE SIGN TYPE C	EACH	18			18
	G	6	2104.503	SAWING BITUMINOUS PAVEMENT	LIN FT	47		47	
	G	6	2104.503	REMOVE METAL CULVERT	LIN FT	170		170	
	G	6	2104.503	REMOVE GUARDRAIL	LIN FT	190		190	
1	G	6	2104.504	REMOVE BITUMINOUS PAVEMENT	P SQ YD	3104		2794	310
			2104.601	REMOVE REGULATED WASTE MATERIAL (BRIDGE)	LUMP SUM	1	1		
			2105.504	GEOTEXTILE FABRIC TYPE 6	SQ YD	5190		4671	519
			2105.509	STABILIZING AGGREGATE	TON	100		90	10
	A	6	2106.507	EXCAVATION - COMMON	P CU YD	1680		1512	168
	A	6	2106.507	COMMON EMBANKMENT (CV)	P CU YD	1016		914	102
	H	6	2118.509	AGGREGATE SURFACING CLASS 2	TON	196		176	20
			2123.610	STREET SWEEPER (WITH PICKUP BROOM)	HOUR	20		18	2
			2130.523	WATER	MGALLON	6			6
			2131.506	CALCIUM CHLORIDE SOLUTION	GALLON	185		166	19
			2211.509	AGGREGATE BASE CLASS 5	P TON	1483		1335	148
2	H	6	2360.509	TYPE SP 12.5 WEARING COURSE MX (3,C)	TON	933		840	93
5	A	6	2401.601	STRUCTURE EXCAVATION	LUMP SUM	1	1		
			2402.508	STRUCTURAL STEEL (3309)	P POUND	23038	23038		
			2403.603	TIMBER RAILING	P LIN FT	136	136		
7			2403.618	GLUED LAMINATED DECK PANELS	P SQ FT	2720	2720		
5			2442.501	REMOVE EXISTING BRIDGE	LUMP SUM	1	1		
			2452.502	C-IP CONC TEST PILE 85 FT LONG 12"	EACH	2	2		
			2452.502	C-IP CONC TEST PILE 85 FT LONG 16"	EACH	2	2		
			2452.502	PILE REDRIVING	EACH	32	32		
			2452.502	PILE ANALYSIS	EACH	2	2		
			2452.502	PILE POINTS 12"	EACH	16	16		
			2452.502	PILE POINTS 16"	EACH	16	16		
			2452.603	C-IP CONCRETE PILING 12"	P LIN FT	1190	1190		
			2452.603	C-IP CONCRETE PILING 16"	P LIN FT	1190	1190		
			2452.618	STEEL SHEET PILING	P SQ FT	2430	2430		
4	I	6	2501.502	18" RC PIPE APRON	EACH	2			2
4	I	6	2501.502	24" RC PIPE APRON	EACH	4			4
4	I	6	2501.502	28" SPAN CAS PIPE-ARCH APRON	EACH	2			2
4	I	6	2501.503	24" RC PIPE CULVERT CLASS III	LIN FT	96			96
4	I	6	2501.503	18" RC PIPE CULVERT DES 3006 CL III	LIN FT	52			52
4	I	6	2501.603	28" SPAN PIPE-ARCH CULVERT	LIN FT	44			44
			2502.502	4" PRECAST CONCRETE HEADWALL	EACH	4		4	
			2502.503	4" PERF TP PIPE DRAIN	LIN FT	1000		1000	
9			2511.504	GEOTEXTILE FILTER TYPE 7	SQ YD	1050	1050		
			2511.507	RANDOM RIPRAP CLASS IV	CU YD	830	830		
		TC1	2533.503	PORTABLE PRECAST CONC BARRIER DES 8337	LIN FT	50		50	
3			2554.502	ANCHORAGE ASSEMBLY - TYPE 31	EACH	3		3	
3			2554.502	END TREATMENT-ENERGY ABSORBING TERMINAL	EACH	1		1	
3			2554.503	TRAFFIC BARRIER DESIGN TYPE 31	LIN FT	491		491	
3,6			2554.503	TRAFFIC BARRIER DESIGN TRANS TYPE 31	LIN FT	100		100	
			2563.601	TRAFFIC CONTROL SUPERVISOR	LUMP SUM	1		1	
			2563.601	TRAFFIC CONTROL	LUMP SUM	1		1	
			2563.613	PORTABLE CHANGEABLE MESSAGE SIGN	UDAY	40		40	
		SS1	2564.518	SIGN PANELS TYPE C	SQ FT	36.3		36.3	
			2572.503	TEMPORARY FENCE	LIN FT	500		450	50
			2573.501	EROSION CONTROL SUPERVISOR	LUMP SUM	1		1	
	F	6	2573.502	STORM DRAIN INLET PROTECTION	EACH	4		4	
	F	6	2573.503	SILT FENCE, TYPE HI	LIN FT	1540		1386	154



I HEREBY CERTIFY THAT THIS PLAN WAS PREPARED BY ME OR UNDER MY DIRECT SUPERVISION AND THAT I AM A DULY LICENSED PROFESSIONAL ENGINEER UNDER THE LAWS OF THE STATE OF MINNESOTA.

Andrew C. McGovern
ANDREW C. MCGOVERN, PROFESSIONAL ENGINEER
 LICENSE NO. **48041** DATE **08/30/2018**

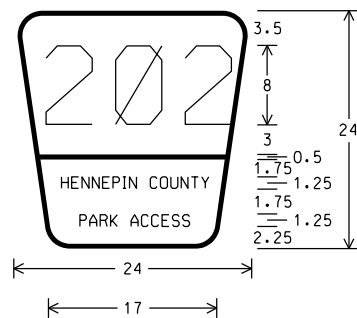
DESIGN BY: D. SEILER
CAD BY: J. SCHERER
CHECKED BY: D. SEILER
LAST REVISION: 08/30/18

STATEMENT OF ESTIMATED QUANTITIES

C.R. 202 HENNEPIN COUNTY PROJECT 0408
 S.P. 027-596-009

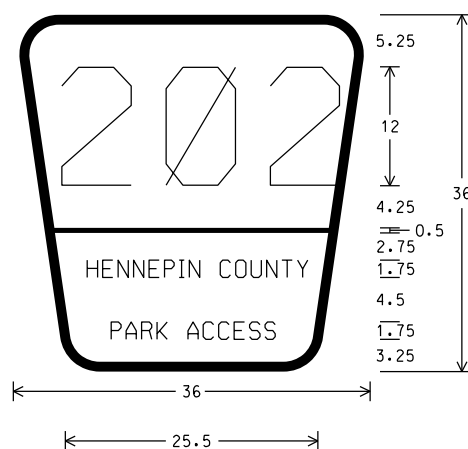
SHEET
 R3.1
 59

SIGN DETAIL 4



2.5" RADIUS,
NO MARGIN,
0.5 BORDER,
D SERIES LETTERING,
DG3 SIGN SHEETING,
WHITE BORDER AND TEXT
ON A BROWN BACKGROUND.

SIGN DETAIL 5



3" RADIUS,
NO MARGIN,
0.5 BORDER,
D SERIES LETTERING,
DG3 SIGN SHEETING,
WHITE BORDER AND TEXT
ON A BROWN BACKGROUND.

TRAFFIC CONTROL DEVICES (1)

SIGN NO.	QUAN.	MOUNTING	SIGN PANEL	CODE NO.	PANEL LEGEND / DESCRIPTION (2)
			SIZE (IN.)		
1	7	(3)	96 X 84	(4)	WORK ZONE ADVANCE NOTICE (5)
2 (6)	1	(3)	132 X 108	(7)	WORK ZONE ADVANCE NOTICE (5)
3	2	(3)	54 X 48	G20-X1	CLOSURE NOTICE
4	2	(3)	48 X 48	W20-3	ROAD CLOSED AHEAD (8)
5	2	(9)	48 X 30	R11-2	ROAD CLOSED
6	2	(9)	60 X 30	R11-4	ROAD CLOSED TO THRU TRAFFIC
7	1	(3)	24 X 12	M4-8	DETOUR
			24 X 12	M3-2	EAST (10)
			24 X 24	(11)	202 HENNEPIN COUNTY PARK ACCESS
			21 X 15	M5-1	ADVANCE 90° TURN ARROW LEFT (10)
8	1	(3)	24 X 12	M4-8	DETOUR
			24 X 12	M3-2	EAST (10)
			24 X 24	(11)	202 HENNEPIN COUNTY PARK ACCESS
			21 X 15	M6-1	HORIZONTAL 90° SINGLE HEAD ARROW LEFT (10)
9	1	(3)	24 X 12	M4-8	DETOUR
			24 X 12	M3-2	EAST (10)
			24 X 24	(11)	202 HENNEPIN COUNTY PARK ACCESS
			21 X 15	M5-1	ADVANCE 90° TURN ARROW RIGHT (10)

- (1) THE QUANTITIES SHOWN WITHIN THIS TABULATION ARE FOR INFORMATION ONLY AND SHALL BE PAID FOR UNDER THE PAY ITEM TRAFFIC CONTROL (LS).
- (2) ALL SIGNING SHALL USE DG3 SIGN SHEETING.
- (3) POSTS OR PORTABLE TUBULAR METAL FRAME.
- (4) SEE SIGN DETAIL 1 ON SHEET TC3.
- (5) DATE TO BE DETERMINED BY THE ENGINEER AND THE SIGN SHALL BE INSTALL A MINIMUM OF 14 DAYS IN ADVANCE OF ROAD CLOSURE.
- (6) THESE SIGNS ARE LARGER AND SHALL ONLY BE USED ALONG T.H. 610.
- (7) SEE SIGN DETAIL 2 ON SHEET TC3.
- (8) INCLUDES ONE HIGH INTENSITY AMBER FLASHING LIGHT ON EACH SIGN.
- (9) 8' TYPE III BARRICADE LEFT WITH TWO AMBER FLASHING LIGHTS ON EACH BARRICADE.
- (10) BLACK BORDER AND LEGEND ON A ORANGE BACKGROUND.
- (11) SEE SIGN DETAIL 4 ON SHEET TC4.
- (12) SEE SIGN DETAIL 5 ON SHEET TC4.



I HEREBY CERTIFY THAT THIS PLAN WAS PREPARED BY ME OR UNDER MY DIRECT SUPERVISION AND THAT I AM A DULY LICENSED PROFESSIONAL ENGINEER UNDER THE LAWS OF THE STATE OF MINNESOTA.

Ryan T. Allers
RYAN T. ALLERS, PROFESSIONAL ENGINEER

45896
LICENSE NO.

9/11/2018
DATE

DESIGN BY: J. WING
CAD BY: J. WING
CHECKED BY: R. ALLERS
LAST REVISION: 9/11/2018

TRAFFIC CONTROL DETAIL SHEET
CO. RD. 202 / HENNEPIN COUNTY PROJECT 0408
S.P. 027-596-009

SHEET
RTC4.1
TC7

TRAFFIC CONTROL DEVICES (1)												
SIGN NO.	QUAN.	MOUNTING	SIGN PANEL SIZE (IN.)	CODE NO.	PANEL LEGEND / DESCRIPTION (2)	SIGN NO.	QUAN.	MOUNTING	SIGN PANEL SIZE (IN.)	CODE NO.	PANEL LEGEND / DESCRIPTION (2)	
10	1	(3)	24 X 12	M4-8	DETOUR	16	1	(3)	36 X 18	M4-8	DETOUR	
			24 X 12	M3-2	EAST (10)				36 X 18	M3-2	EAST (10)	
			24 X 24	(11)	202 HENNEPIN COUNTY PARK ACCESS				36 X 36	(12)	202 HENNEPIN COUNTY PARK ACCESS	
			21 X 15	M6-1	HORIZONTAL 90° SINGLE HEAD ARROW RIGHT (10)				30 X 24	M6-1	HORIZONTAL 90° SINGLE HEAD ARROW LEFT (10)	
11	1	(3)	24 X 12	M4-8	DETOUR	17	1	(3)	36 X 18	M4-8	DETOUR	
			24 X 12	M3-2	EAST (10)				36 X 18	M3-2	EAST (10)	
			24 X 24	(11)	202 HENNEPIN COUNTY PARK ACCESS				36 X 36	(12)	202 HENNEPIN COUNTY PARK ACCESS	
			21 X 15	M5-2	ADVANCE 45° TURN ARROW LEFT (10)				30 X 24	M5-2	ADVANCE 45° TURN ARROW RIGHT (10)	
12	1	(3)	24 X 12	M4-8	DETOUR	18	1	(3)	36 X 18	M4-8	DETOUR	
			24 X 12	M3-2	EAST (10)				36 X 18	M3-2	EAST (10)	
			24 X 24	(11)	202 HENNEPIN COUNTY PARK ACCESS				36 X 36	(12)	202 HENNEPIN COUNTY PARK ACCESS	
			21 X 15	M6-2	HORIZONTAL 45° SINGLE HEAD ARROW LEFT (10)				30 X 24	M6-2	HORIZONTAL 45° SINGLE HEAD ARROW RIGHT (10)	
13	7	(3)	24 X 12	M4-8	DETOUR	19	2	(3)	36 X 18	M4-8	DETOUR	
			24 X 12	M3-2	EAST (10)				36 X 18	M3-2	EAST (10)	
			24 X 24	(11)	202 HENNEPIN COUNTY PARK ACCESS				36 X 36	(12)	202 HENNEPIN COUNTY PARK ACCESS	
			21 X 15	M6-3	VERTICAL SINGLE HEAD ARROW UP (10)				30 X 24	M6-3	VERTICAL SINGLE HEAD ARROW UP (10)	
14	1	(3)	24 X 12	M4-6	END (10)							
			24 X 12	M4-8	DETOUR							
			24 X 12	M3-2	EAST (10)							
			24 X 24	(11)	202 HENNEPIN COUNTY PARK ACCESS							
15 (6)	1	(3)	36 X 18	M4-8	DETOUR							
			36 X 18	M3-2	EAST (10)							
			36 X 36	(12)	202 HENNEPIN COUNTY PARK ACCESS							
			30 X 24	M5-1	ADVANCE 90° TURN ARROW LEFT (10)							

- (1) THE QUANTITIES SHOWN WITHIN THIS TABULATION ARE FOR INFORMATION ONLY AND SHALL BE PAID FOR UNDER THE PAY ITEM TRAFFIC CONTROL (LS).
- (2) ALL SIGNING SHALL USE DG3 SIGN SHEETING.
- (3) POSTS OR PORTABLE TUBULAR METAL FRAME.
- (4) SEE SIGN DETAIL 1 ON SHEET TC3.
- (5) DATE TO BE DETERMINED BY THE ENGINEER AND THE SIGN SHALL BE INSTALL A MINIMUM OF 14 DAYS IN ADVANCE OF ROAD CLOSURE.
- (6) THESE SIGNS ARE LARGER AND SHALL ONLY BE USED ALONG T.H. 610.
- (7) SEE SIGN DETAIL 2 ON SHEET TC3.
- (8) INCLUDES ONE HIGH INTENSITY AMBER FLASHING LIGHT ON EACH SIGN.
- (9) 8' TYPE III BARRICADE LEFT WITH TWO AMBER FLASHING LIGHTS ON EACH BARRICADE.
- (10) BLACK BORDER AND LEGEND ON A ORANGE BACKGROUND.
- (11) SEE SIGN DETAIL 4 ON SHEET TC4.
- (12) SEE SIGN DETAIL 5 ON SHEET TC4.



I HEREBY CERTIFY THAT THIS PLAN WAS PREPARED BY ME OR UNDER MY DIRECT SUPERVISION AND THAT I AM A DULY LICENSED PROFESSIONAL ENGINEER UNDER THE LAWS OF THE STATE OF MINNESOTA.

Ryan T. Allers
RYAN T. ALLERS, PROFESSIONAL ENGINEER

45896 **9/11/2018**
 LICENSE NO. DATE

DESIGN BY: J. WING
CAD BY: J. WING
CHECKED BY: R. ALLERS
LAST REVISION: 9/11/2018

TRAFFIC CONTROL DETAIL SHEET

CO. RD. 202 / HENNEPIN COUNTY PROJECT 0408
S.P. 027-596-009

SHEET
RTC5.1
TC7

TRAFFIC CONTROL DEVICES (1)												
SIGN NO.	QUAN.	MOUNTING	SIGN PANEL SIZE (IN.)	CODE NO.	PANEL LEGEND / DESCRIPTION (2)	SIGN NO.	QUAN.	MOUNTING	SIGN PANEL SIZE (IN.)	CODE NO.	PANEL LEGEND / DESCRIPTION (2)	
20	4	(3)	24 X 12	M4-8	DETOUR	26	9	(3)	24 X 12	M4-8	DETOUR	
			24 X 12	M3-4	WEST (10)				24 X 12	M3-4	WEST (10)	
			24 X 24	(11)	202 HENNEPIN COUNTY PARK ACCESS				24 X 24	(11)	202 HENNEPIN COUNTY PARK ACCESS	
			21 X 15	M5-1	ADVANCE 90° TURN ARROW LEFT (10)				21 X 15	M6-3	VERTICAL SINGLE HEAD ARROW UP (10)	
21	4	(3)	24 X 12	M4-8	DETOUR	27	1	(3)	24 X 12	M4-6	END (10)	
			24 X 12	M3-4	WEST (10)				24 X 12	M4-8	DETOUR	
			24 X 24	(11)	202 HENNEPIN COUNTY PARK ACCESS				24 X 12	M3-4	WEST (10)	
			21 X 15	M6-1	HORIZONTAL 90° SINGLE HEAD ARROW LEFT (10)				24 X 24	(11)	202 HENNEPIN COUNTY PARK ACCESS	
22	1	(3)	24 X 12	M4-8	DETOUR	28 (6)	1	(3)	36 X 18	M4-8	DETOUR	
			24 X 12	M3-4	WEST (10)				36 X 18	M3-4	WEST (10)	
			24 X 24	(11)	202 HENNEPIN COUNTY PARK ACCESS				36 X 36	(12)	202 HENNEPIN COUNTY PARK ACCESS	
			21 X 15	M5-1	ADVANCE 90° TURN ARROW RIGHT (10)				30 X 24	M5-2	ADVANCE 45° TURN ARROW RIGHT (10)	
23	1	(3)	24 X 12	M4-8	DETOUR	29 (6)	1	(3)	36 X 18	M4-8	DETOUR	
			24 X 12	M3-4	WEST (10)				36 X 18	M3-4	WEST (10)	
			24 X 24	(11)	202 HENNEPIN COUNTY PARK ACCESS				36 X 36	(12)	202 HENNEPIN COUNTY PARK ACCESS	
			21 X 15	M6-1	HORIZONTAL 90° SINGLE HEAD ARROW RIGHT (10)				30 X 24	M6-2	HORIZONTAL 45° SINGLE HEAD ARROW RIGHT (10)	
24	1	(3)	24 X 12	M4-8	DETOUR	30 (6)	3	(3)	36 X 18	M4-8	DETOUR	
			24 X 12	M3-4	WEST (10)				36 X 18	M3-4	WEST (10)	
			24 X 24	(11)	202 HENNEPIN COUNTY PARK ACCESS				36 X 36	(12)	202 HENNEPIN COUNTY PARK ACCESS	
			21 X 15	M5-2	ADVANCE 45° TURN ARROW RIGHT (10)				30 X 24	M6-3	VERTICAL SINGLE HEAD ARROW UP (10)	
25	1	(3)	24 X 12	M4-8	DETOUR							
			24 X 12	M3-4	WEST (10)							
			24 X 24	(11)	202 HENNEPIN COUNTY PARK ACCESS							
			21 X 15	M6-2	HORIZONTAL 45° SINGLE HEAD ARROW RIGHT (10)							

- (1) THE QUANTITIES SHOWN WITHIN THIS TABULATION ARE FOR INFORMATION ONLY AND SHALL BE PAID FOR UNDER THE PAY ITEM TRAFFIC CONTROL (LS).
- (2) ALL SIGNING SHALL USE DG3 SIGN SHEETING.
- (3) POSTS OR PORTABLE TUBULAR METAL FRAME.
- (4) SEE SIGN DETAIL 1 ON SHEET TC3.
- (5) DATE TO BE DETERMINED BY THE ENGINEER AND THE SIGN SHALL BE INSTALL A MINIMUM OF 14 DAYS IN ADVANCE OF ROAD CLOSURE.
- (6) THESE SIGNS ARE LARGER AND SHALL ONLY BE USED ALONG T.H. 610.
- (7) SEE SIGN DETAIL 2 ON SHEET TC3.
- (8) INCLUDES ONE HIGH INTENSITY AMBER FLASHING LIGHT ON EACH SIGN.
- (9) 8' TYPE III BARRICADE LEFT WITH TWO AMBER FLASHING LIGHTS ON EACH BARRICADE.
- (10) BLACK BORDER AND LEGEND ON A ORANGE BACKGROUND.
- (11) SEE SIGN DETAIL 4 ON SHEET TC4.
- (12) SEE SIGN DETAIL 5 ON SHEET TC4.



I HEREBY CERTIFY THAT THIS PLAN WAS PREPARED BY ME OR UNDER MY DIRECT SUPERVISION AND THAT I AM A DULY LICENSED PROFESSIONAL ENGINEER UNDER THE LAWS OF THE STATE OF MINNESOTA.

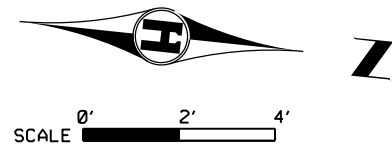
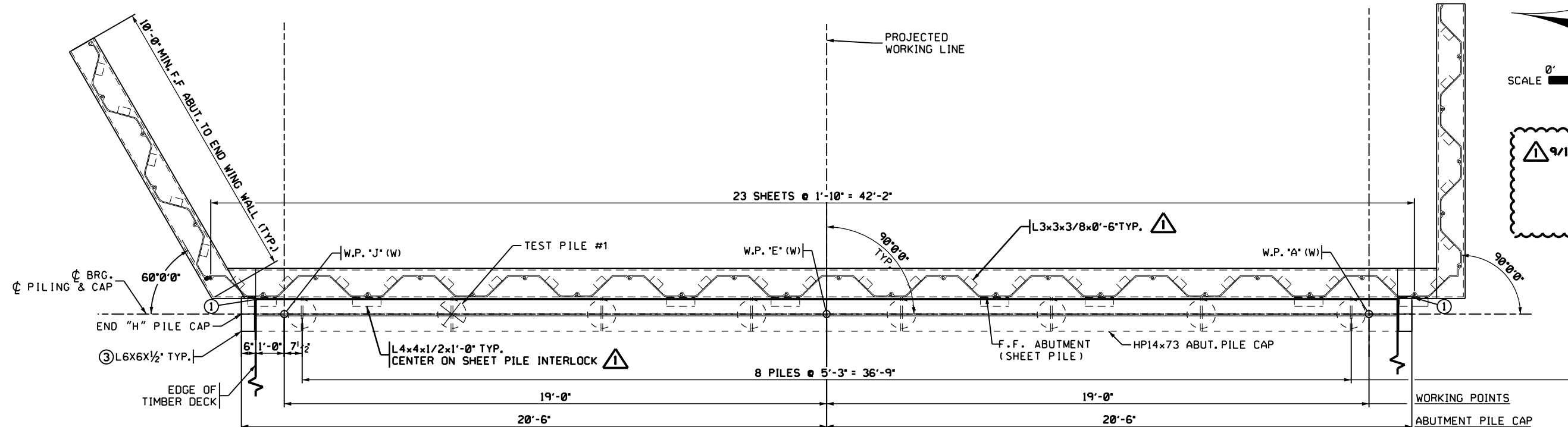
Ryan T. Allers
 RYAN T. ALLERS, PROFESSIONAL ENGINEER

45896 LICENSE NO. 9/11/2018 DATE

DESIGN BY: J. WING
 CAD BY: J. WING
 CHECKED BY: R. ALLERS
 LAST REVISION: 9/11/2018

TRAFFIC CONTROL DETAIL SHEET
 CO. RD. 202 / HENNEPIN COUNTY PROJECT 0408
 S.P. 027-596-009

SHEET
 RTC6.1
 TC7



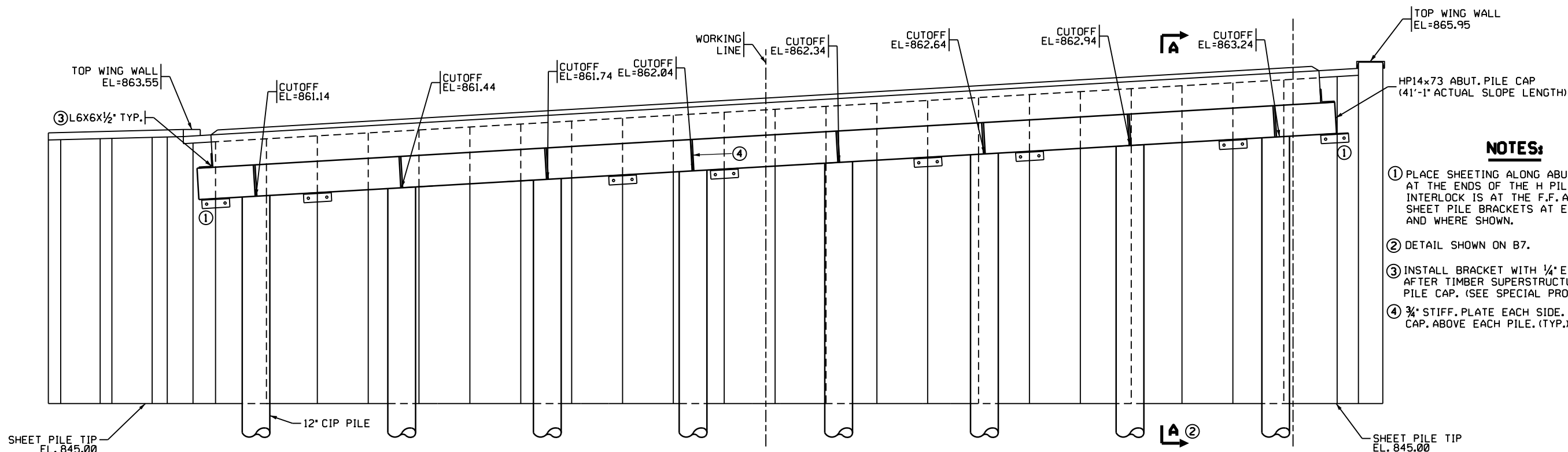
9/10/18 REVISED NOTE

SOUTH

WEST ABUTMENT PLAN

(DIMENSIONS SHOWN IN PLAN VIEW ARE HORIZONTAL)

NORTH



- NOTES:**
- ① PLACE SHEETING ALONG ABUTMENT SO THAT AT THE ENDS OF THE H PILE CAP THE FLANGE INTERLOCK IS AT THE F.F. ABUT. PLACE CAP/SHEET PILE BRACKETS AT ENDS OF H PILE AND WHERE SHOWN.
 - ② DETAIL SHOWN ON B7.
 - ③ INSTALL BRACKET WITH 1/4" EXPANSION MATERIAL AFTER TIMBER SUPERSTRUCTURE IS SECURED TO PILE CAP. (SEE SPECIAL PROVISIONS)
 - ④ 3/4" STIFF. PLATE EACH SIDE OF PILE CAP. ABOVE EACH PILE. (TYP.)

SOUTH

ABUTMENT ELEVATION

NORTH



I HEREBY CERTIFY THAT THIS PLAN WAS PREPARED BY ME OR UNDER MY DIRECT SUPERVISION AND THAT I AM A DULY LICENSED PROFESSIONAL ENGINEER UNDER THE LAWS OF THE STATE OF MINNESOTA.

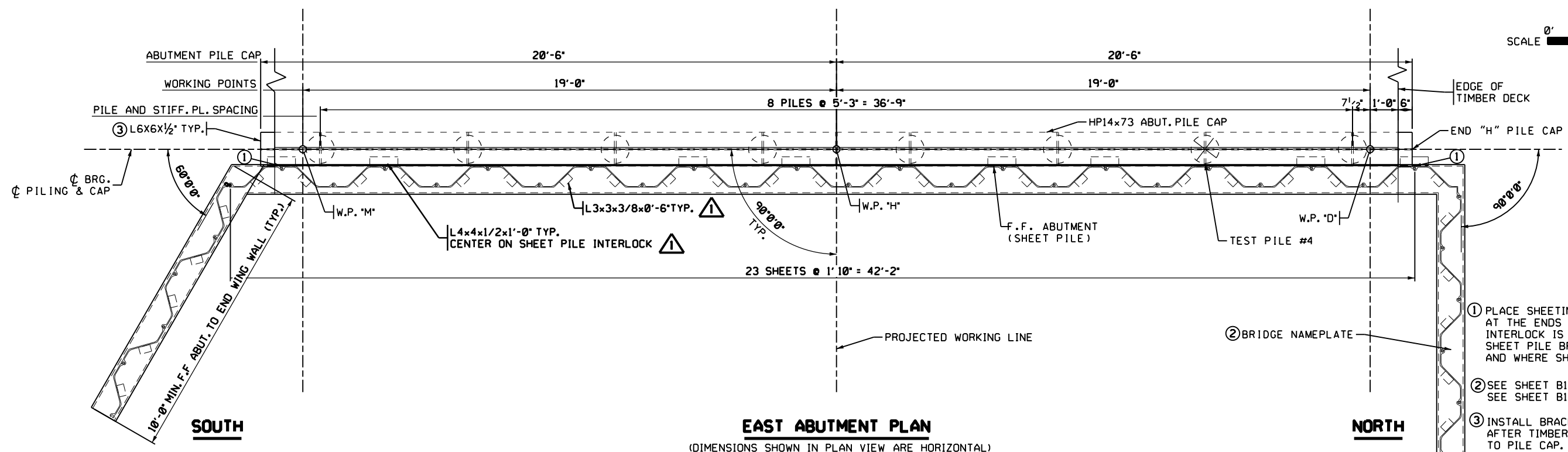
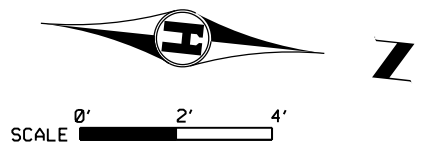
John D. Ekola
 JOHN D. EKOLA, PROFESSIONAL ENGINEER

53076 06/11/18
 LICENSE NO. DATE

DESIGN BY: J. EKOLA
 CHECKED BY: J. BRONDER
 DRAWN BY: J. SCHERER
 CHECKED BY: J. EKOLA

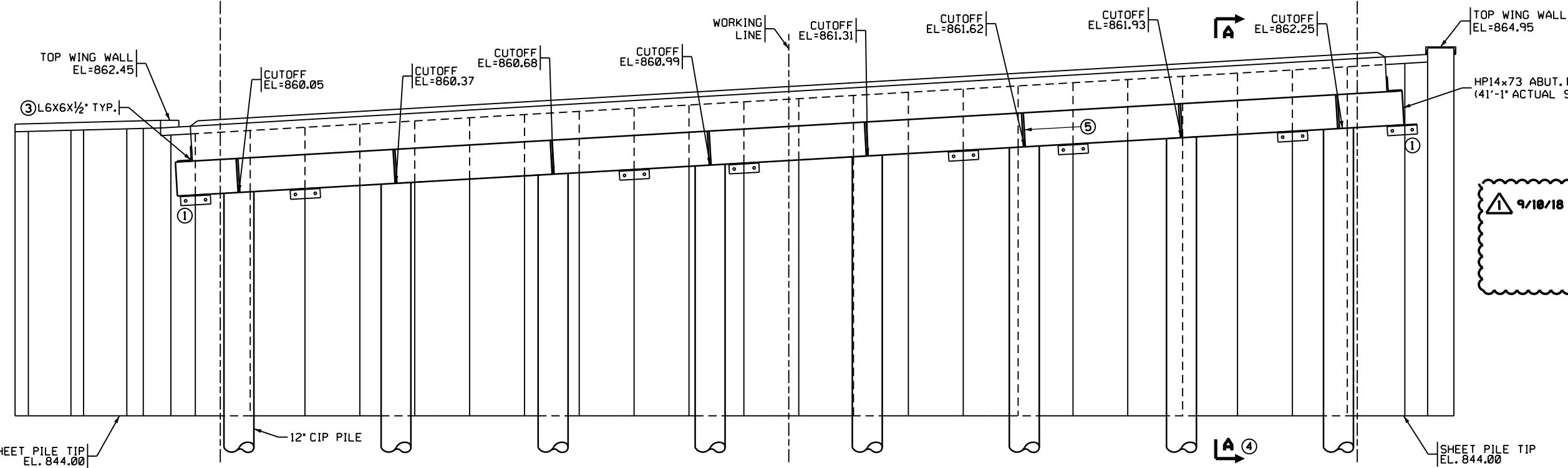
WEST ABUTMENT PLAN AND ELEVATION
 C.R. 202 / HENNEPIN COUNTY PROJECT 0408
 S.P. 027-596-009
 BRIDGE 27C53

SHEET
 RB4.1
 B26



EAST ABUTMENT PLAN
(DIMENSIONS SHOWN IN PLAN VIEW ARE HORIZONTAL)

- NOTES:**
- ① PLACE SHEETING ALONG ABUTMENT SO THAT AT THE ENDS OF THE H PILE CAP THE FLANGE INTERLOCK IS AT THE F.F. ABUT. PLACE CAP/SHEET PILE BRACKETS AT ENDS OF H PILE AND WHERE SHOWN.
 - ② SEE SHEET B1 FOR LOCATION. SEE SHEET B17 FOR DETAILS.
 - ③ INSTALL BRACKET WITH 1/4" EXPANSION MATERIAL AFTER TIMBER SUPERSTRUCTURE IS SECURED TO PILE CAP. (SEE SPECIAL PROVISIONS)
 - ④ DETAIL SHOWN ON B7.
 - ⑤ 3/4" STIFFENER PLATE (BOTH SIDES)



ABUTMENT ELEVATION

⚠ 9/10/18 REVISED NOTE



I HEREBY CERTIFY THAT THIS PLAN WAS PREPARED BY ME OR UNDER MY DIRECT SUPERVISION AND THAT I AM A DULY LICENSED PROFESSIONAL ENGINEER UNDER THE LAWS OF THE STATE OF MINNESOTA.

John D. Ekola
JOHN D. EKOLA, PROFESSIONAL ENGINEER
 53076 LICENSE NO. 06/11/18 DATE

DESIGN BY: J. EKOLA
CHECKED BY: J. BRONDER
DRAWN BY: J. SCHERER
CHECKED BY: J. EKOLA

EAST ABUTMENT PLAN AND ELEVATION
 C.S.A.H. 202 / HENNEPIN COUNTY PROJECT 0408
 S.P. 027-596-009
 BRIDGE 27C53

SHEET
 RB5.1
 B26