



**Hennepin County Transportation Department**

**ADDENDUM**

**TO PLANS, SPECIFICATIONS AND SPECIAL PROVISIONS FOR  
CSAH 101 FROM CSAH 62 TO HUTCHINS DRIVE  
HENNEPIN COUNTY TRANSPORTATION DEPARTMENT**

**(To be opened Tuesday, February 17, 2015 at 2:00 P.M.)**

**ADDENDUM NO. 4**

**CSAH 101; C.P. 9917  
S.A.P. 027-701-019; 027-603-057**

**NOTICE TO ALL BIDDERS:**

**PROPOSAL**

1. The culvert field inspection information will be uploaded under the "Project Files" and "Specifications" heading as part of this addendum.
2. Division S-99 (2540) INSTALL MAILBOX SUPPORT, **Replace** the first paragraph on page 172-S with the following:  
  
"This work shall consist of salvaging existing mailbox supports and installing the salvaged Mail Box Supports in accordance with the applicable MnDOT Standard Specifications and the following:"
3. Division S-50 (2104) REMOVE PAVEMENT AND MISCELLANEOUS STRUCTURES, **Replace** S-50.43 on page 65-S with the following:

S-50.43            Item 2104.601, Remove Box Culvert, is for complete removal of the existing box culvert as indicated in the Plans. The contract unit price per lump sum includes all costs associated with the complete removal and disposal of all components of the existing box culvert including but not limited to; footings, wing walls, headwalls, barrel, etc. Diversion of the creek to complete the removal and replacement of the existing box culvert shall be paid under item 2105.601 Temporary Stream Diversion.

**PLANS**

See Attachment A - Revised Plan Sheets for the following modifications:

1. Plan Sheet No. 46R1 CONSTRUCTION NOTES & STANDARD PLATES – **Remove and Replace** with attached Sheet 46R2. 9350A removed from standard plate list.
2. Plan Sheet No. 285R RETAINING WALL PLAN – MODULAR BLOCK – **Remove and Replace** with attached Sheet 285R1. Notes revised.

3. Plan Sheet No. 288R RETAINING WALL PLAN – RAILING DETAIL – **Remove and Replace** with attached Sheet 288R1. Last general note revised.
4. Plan Sheet No. M4 INTERCEPTOR 7016 HWY 101 CROSSING DETAILS – **Remove and Replace** with attached Sheet M4R. Detail 3-M4R WATERTIGHT MH LID revised.

KSA  
February 10, 2015  
Attachment(s)

***Receipt of this addendum must be acknowledged in accordance with the provisions of 1210 of the specifications.***

Attachment A – Revised Plan Sheets

CONSTRUCTION AND SOIL NOTES

1. SUITABLE GRADING MATERIAL ON THIS PROJECT, WHETHER OBTAINED LOCALLY OR FROM BORROW, SHALL CONSIST OF ALL SOILS EXCEPT TOPSOIL, DEBRIS, PEAT, MUCK AND ORGANIC OR OTHER UNSTABLE MATERIAL. ALL SUITABLE GRADING MATERIAL SHOULD BE EITHER A UNIFORM SOIL TYPE OR SUFFICIENTLY MIXED AND BLENDED TO BE UNIFORM. ALL MATERIAL IS SUBJECT TO THE DISCRETION OF THE ENGINEER.
2. SELECT GRANULAR (MOD) 10% MATERIAL SHALL MEET THE REQUIREMENTS OF SPEC 3149 MODIFIED TO LESS THAN 10% PASSING THE 200 SIEVE.
3. STRIP ALL TOPSOIL AND INPLACE SLOPE DRESSING WHERE PRESENT IN AREAS TO BE DISTURBED BY CONSTRUCTION AND REUSE AS SLOPE DRESSING. AN ESTIMATED AVERAGE DEPTH OF INPLACE SLOPE DRESSING IS 10 INCHES THICK
4. SLOPE DRESSING ON THIS PROJECT IS DEFINED AS THE TOPSOIL OR OTHER SOIL PLACED DURING PRIOR CONSTRUCTION FOR ESTABLISHING TURF. INPLACE SLOPE DRESSING GENERALLY CONSISTS OF SILTY SAND (SM) WHICH WAS DARK BROWN TO BLACK, MOIST, AND CONTAINED TRACE AMOUNTS OF ROOTS. SOIL BORINGS ENCOUNTERED APPROXIMATELY 6' TO 24' OF TOPSOIL AT THE SURFACE, WITH AN AVERAGE DEPTH OF 10'.
5. OBTAIN COMPACTION ON PERMANENT GRADING PORTIONS OF CONSTRUCTION IN ACCORDANCE WITH THE "SPECIFIED DENSITY METHOD" REQUIREMENTS.
6. OBTAIN COMPACTION ON GRADING PORTIONS OF TEMPORARY CONSTRUCTION IN ACCORDANCE WITH THE "QUALITY COMPACTION METHOD" REQUIREMENTS.
7. TEST ROLLING SHALL NOT BE REQUIRED ON CSAH 101. TEST ROLLING SHALL BE REQUIRED FOR THE CITY STREETS AND SCHOOL STREETS.
8. THE BOTTOM OF ALL EXCAVATION SHALL BE COMPACTED WITH A MINIMUM OF FOUR PASSES WITH AN APPROVED ROLLER.
9. IN ANY PROPOSED WIDENING CONSTRUCTION, THE CONTRACTOR SHOULD STRIVE TO SUBSTANTIALLY MATCH THE SOILS INPLACE BELOW THE PROPOSED SUBCUT.
10. IN ANY CASE WHERE GRANULAR SOIL EMBANKMENTS OR BACKFILL JOINS PLASTIC SOIL EMBANKMENTS OR BACKFILL A 1(V):20(H) TAPER SHALL BE CONSTRUCTED SO THAT THE GRANULAR SOIL OVERLAYS THE PLASTIC SOIL.
11. AS A PRECAUTIONARY MEASURE FROM A SAFETY STANDPOINT, TRAFFIC LANES TO BE USED DURING CONSTRUCTION MUST BE DELINEATED TO KEEP VEHICLES A SAFE DISTANCE AWAY FROM THE ADJACENT EXCAVATION. THE DELINEATION SHOULD COINCIDE WITH POINTS ESTABLISHED BY PROJECTING A 1(V):2(H) OR FLATTER SLOPE BETWEEN THE EDGE OF THE TRAFFIC SURFACE AND THE BOTTOM OF THE EXCAVATION.
12. WHERE CONNECTING TO INPLACE ROADWAYS AT THE TERMINI OF PROPOSED NEW CONSTRUCTION, CUT VERTICALLY TO THE BOTTOM OF THE INPLACE SURFACING, THEN AT A 1(V):20(H) TAPER TO THE BOTTOM OF THE RECOMMENDED SUBGRADE EXCAVATION.
13. PROVIDE A UNIFORM TACK COAT BETWEEN ALL BITUMINOUS LAYERS AND PRIOR TO PLACING ANY BITUMINOUS MIXTURES ON EXISTING PAVEMENT. THE BITUMINOUS TACK COAT MATERIAL SHALL BE APPLIED AT A UNIFORM RATE OF 0.05 GAL/SQ YD BETWEEN BITUMINOUS LAYERS AND 0.07 TO 0.10 GAL/SQ YD ON CONCRETE OR MILLED BITUMINOUS SURFACES PRIOR TO BEING OVERLAID. PLACEMENT OF TACK COAT SHALL BE IN ACCORDANCE WITH SPECIFICATION 2357.
14. TEMPORARY EROSION CONTROL - TEMPORARY EROSION CONTROL DEVICES AND THEIR SUGGESTED LOCATIONS HAVE BEEN SHOWN IN THE PLANS ALONG WITH PAY ITEMS FOR THEIR USE. THIS DOES NOT HOWEVER RELIEVE THE CONTRACTOR OF HIS RESPONSIBILITIES TO CONDUCT HIS CONSTRUCTION IN A MANNER THAT WILL CONTROL EROSION. RESPONSIBILITY FOR CONTROLLING EROSION AND MAINTENANCE OF EROSION CONTROL IS AS SET IN MN/DOT SPECIFICATIONS 1717, 1803, 2101, 2105, 2573, 2575, AND IS AMENDED BY THE SPECIAL PROVISIONS.
15. THE CONTRACTOR SHALL COORDINATE WITH THE APPROPRIATE OWNERS THE REMOVAL AND REINSTALLATION OF ALL MISCELLANEOUS STRUCTURES WITHIN THE PROJECT LIMITS, SUCH AS BUS BENCHES, PRIVATE SIGNS, GARBAGE PICKUPS, MAIL BOXES, ETC... THIS WORK SHALL BE INCIDENTAL.
16. ALL TRAFFIC CONTROL DEVICES SHALL CONFORM TO THE LATEST EDITION OF THE MINNESOTA MANUAL ON UNIFORM TRAFFIC CONTROL DEVICES, INCLUDING FIELD MANUAL.
17. CONTRACTOR SHALL NOTIFY HENNEPIN COUNTY SURVEYOR PRIOR TO DISTURBANCE OF ANY MONUMENTATION.
18. UNSUITABLE GRADING MATERIAL MAY BE PLACED OUTSIDE OF 1 TO 1 1/2 SLOPE EXTENDING DOWN AND OUTWARD FROM THE BERM P.I. UNLESS OTHERWISE SHOWN IN THE CROSS SECTION.
19. THE CONSTRUCTION LIMITS AS SHOWN IN THE PLANS REPRESENT THE POINT OF INTERSECTION BETWEEN THE REQUIRED FILL OR CUT SLOPE AND THE EXISTING GROUND LINE AS DEPICTED ON THE CROSS SECTIONS. THE CONSTRUCTION LIMITS DO NOT INCLUDE AREAS REQUIRED FOR SLOPE ROUNDING.
20. MUCK EXCAVATION SHALL CONSIST OF ALL SATURATED AND UNSATURATED MIXTURES OF SOIL AND ORGANIC MATTER NOT SUITABLE FOR FOUNDATION MATERIAL REGARDLESS OF MOISTURE CONTENT, THAT IS REMOVED FROM BELOW THE NATURAL GROUND LEVEL OF MARSHES, SWAMPS AND BOGS OVER WHICH EMBANKMENTS ARE TO BE CONSTRUCTED.

THE FOLLOWING STANDARD PLATES APPROVED BY THE FEDERAL HIGHWAY ADMINISTRATION, SHALL APPLY TO THIS PROJECT.

MN/DOT STANDARD PLATES	
PLATE NO.	DESCRIPTION
3000 L	REINFORCED CONCRETE PIPE (5 SHEETS)
3006 G	GASKET JOINT FOR R. C. PIPE (2 SHEETS)
3014 J	REINFORCED CONCRETE PIPE ARCH (2 SHEETS)
3022 C	PRECAST CONCRETE SAFETY APRON (3 SHEETS)
3040 F	CORRUGATED METAL PIPE CULVERT
3100 G	CONCRETE APRON FOR REINFORCED CONCRETE PIPE
3123 J	METAL APRON FOR CS PIPE
3133 D	RIPRAP AT RCP OUTLETS
3139 B	RIPRAP AT PRECAST CONCRETE END SECTIONS
3145 G	CONCRETE PIPE TIES
3221 C	CORRUGATED STEEL PIPE COUPLING BAND (3 SHEETS)
4005 M	MANHOLE OR CATCH BASIN (DESIGN F)
4006 L	MANHOLE OR CATCH BASIN (DESIGN G)
4010 H	CONCRETE SHORT CONE & ADJUSTING RING
4011 E	PRECAST CONCRETE BASE
4020 J	MANHOLE OR CATCH BASIN COVER (2 SHEETS)
4022 A	3 FT. X 2 FT. OPENING MANHOLE OR CATCH BASIN COVER
4024 A	48" DIA PRECAST SHALLOW DEPTH CATCH BASIN (DESIGN SD)
4026 A	CONCRETE ENCASED CONCRETE ADJUSTMENT RINGS
4101 D	RING CASTING FOR MANHOLE OR CATCH BASIN (NO. 700-7)
4110 F	COVER CASTING FOR MANHOLE
4129 G	CATCH BASIN & FRAME CASTING
4132 F	CATCH BASIN FRAME CASTING
4140 D	SPECIAL GRATE CASTING FOR CATCH BASINS
4143 E	STOOL GRATE & CONCRETE FRAME
4154 B	CATCH BASIN GRATE CASTING (NO. 816)
4160 D	CURB BOX CASTING FOR CATCH BASIN
4180 J	MANHOLE OR CATCH BASIN STEP
7020 K	CONCRETE CURB (DESIGN B, V, S, DR, AND BR) (2 SHEETS)
7035 N	CONCRETE WALK AND CURB RETURNS AT STREET ENTRANCE
7038 A	DETECTABLE WARNING SURFACE TRUNCATED DOMES
7100 H	CONCRETE CURB AND GUTTER (DESIGN B & V)
7109 C	MEDIAN NOSE AND ISLAND
7111 J	INSTALLATION OF CATCH BASIN CASTINGS
7113 A	CONCRETE APPROACH NOSE DETAIL
8000 I	STANDARD BARRICADES
8110 E	TRAFFIC SIGNAL BRACKETING (POLE MOUNTED)
8111 E	TRAFFIC SIGNAL BRACKETING (PEDESTAL MOUNTED) (3 SHEETS)
(1) 8114 A	P.V.C. HANDHOLE/PULLBOX (NO VEHICLE LOAD) (2 SHEETS)
(3) 8122 F	PEDESTAL AND PEDESTAL BASE (FOR TRAFFIC CONTROL SIGNALS SUPPORT) (2 SHEETS)
(2) 8123 G	POLE AND MAST ARM (LUMINAIRE AND TRAFFIC LIGHTS ASSEMBLY (2 SHEETS)
8127 D	LIGHT BASE DESIGN E (2 SHEETS)
8150 C	INSTALLATION OF CULVERT MARKERS
8337 C	TEMPORARY PORTABLE PRECAST CONCRETE BARRIER (TYPE F) (3 SHEETS)
9000 E	APPROACHES AND ENTRANCES
9102 E	TURF ESTABLISHMENT AREAS
9322 K	CHAIN LINK FENCE (2 SHEETS)

(1) SEE SPECIAL PROVISIONS FOR METAL COVERS AND CONCRETE COLLAR (WACK) REQUIREMENTS.

(2) SIGNAL MOUNTING PLATE (END OF MAST ARM) APPLIES.

(3) SEE SPECIAL PROVISIONS.

⚠ NOTE 7 REVISED.

⚠ NOTE 5 REVISED.

⚠ 9350A REMOVED FROM STANDARD PLATES LIST

GENERAL NOTES

1. EXCAVATION FOR PROPOSED SIDEWALK AND TRAIL CONSTRUCTION SHALL BE PAID AS COMMON EXCAVATION AND SUBGRADE EXCAVATION.
2. SUBGRADE MATERIAL FOR CONCRETE WALKS AND BITUMINOUS PATHS SHALL BE ON SITE SUITABLE GRADING MATERIAL AND SHALL BE APPROVED BY THE ENGINEER PRIOR TO INSTALLATION AND BE INCIDENTAL.



I HEREBY CERTIFY THAT THIS PLAN WAS PREPARED BY ME OR UNDER MY DIRECT SUPERVISION AND THAT I AM A DULY LICENSED PROFESSIONAL ENGINEER UNDER THE LAWS OF THE STATE OF MINNESOTA.

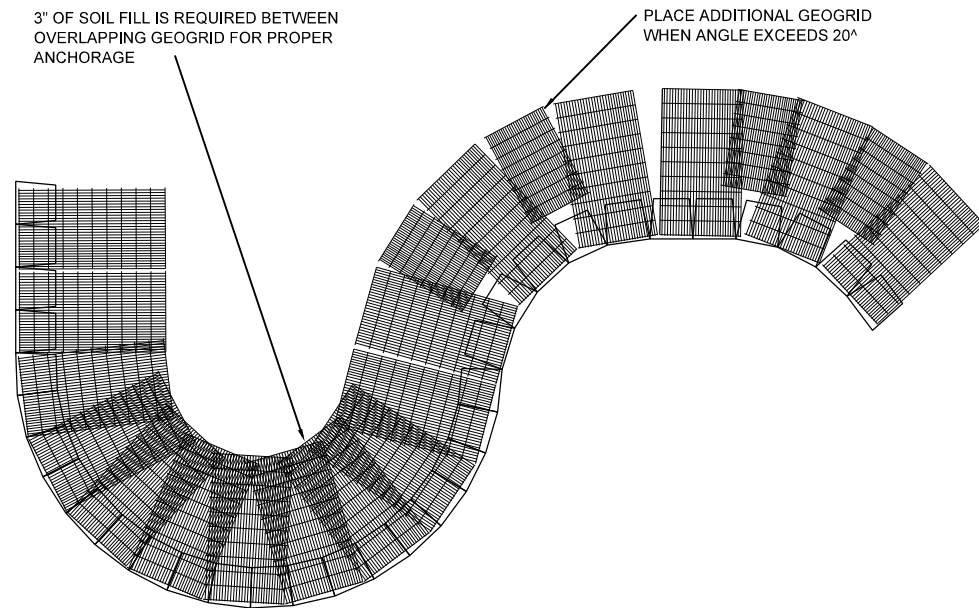
*Nicholas E. Hentges*  
 NICHOLAS E. HENTGES, PROFESSIONAL ENGINEER

44620 11/21/2014  
 LICENSE NO. DATE

DESIGN BY: MJS  
 CAD BY: MWM  
 CHECKED BY: NEH  
 LAST REVISION: 2/10/2015

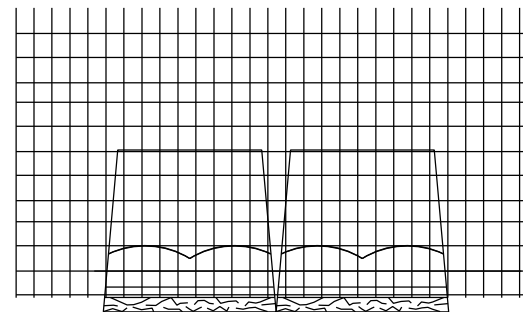
CONSTRUCTION NOTES & STANDARD PLATES  
 C.S.A.H. 101 / HENNEPIN COUNTY PROJECT 9917  
 S.A.P. 142-020-046, 142-159-002,  
 S.A.P. 027-701-019, S.A.P. 027-603-057, CITY PROJECT 12208

SHEET  
 46R2  
 571



**GEOGRID INSTALLATION ON CURVES**

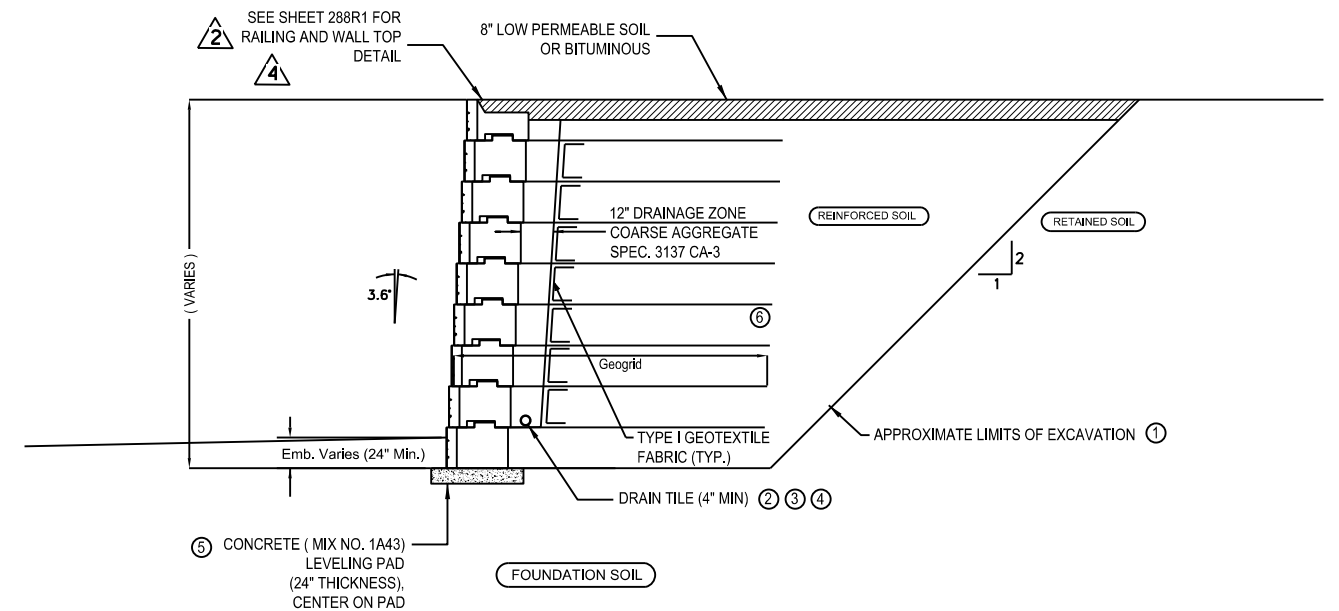
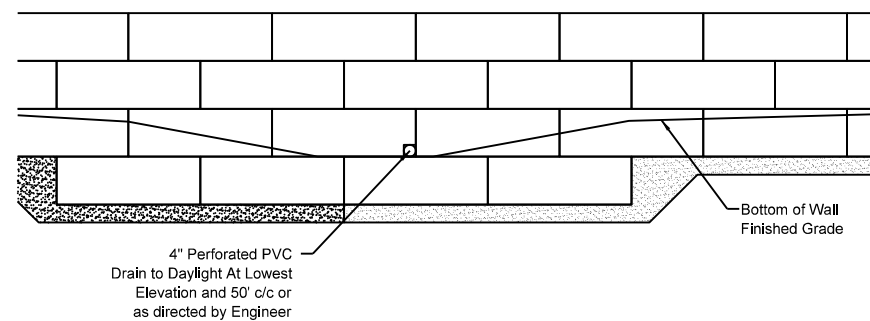
**GEOGRID PLACEMENT / ORIENTATION**



NOTE: GEOGRID SHALL BE LAID ON TOP OF THE BLOCK AND HORIZONTALLY ON LEVEL COMPACTED BACKFILL. THE GEOGRID MUST BE EXTENDED FORWARD ON THE BLOCK OVER THE TONGUE AND GROOVE AND UP TO THE UNEXPOSED FRONT EDGE OF THE BLOCK. THE NEXT COURSE OF BLOCK SHALL BE PLACED SUCH THAT THE GEOGRID IS DEFORMED OVER THE TONGUE AND GROOVE. THIS NEXT COURSE OF BLOCK MUST BE SLID FORWARD SUCH THAT THE BACK EDGE OF THE GROOVE ON THIS BLOCK IS UP AGAINST THE BACK EDGE OF THE TONGUE ON THE LOWER UNIT WITH THE GEOGRID PINCHED BETWEEN THE TONGUE AND GROOVE. PULL GRID TAUGHT, REMOVING ANY SLACK. ANCHOR/STAKE GEOGRID TO THE COMPACTED BACKFILL PRIOR TO PLACING MORE BACKFILL. **PROPER GEOGRID ORIENTATION IS CRITICAL. THE STRENGTH OF THE GEOGRID (THE FACTORY EDGE) MUST EXTEND PERPENDICULAR TO FACE OF WALL. CONSULT GEOGRID MANUFACTURER'S INSTRUCTIONS.**

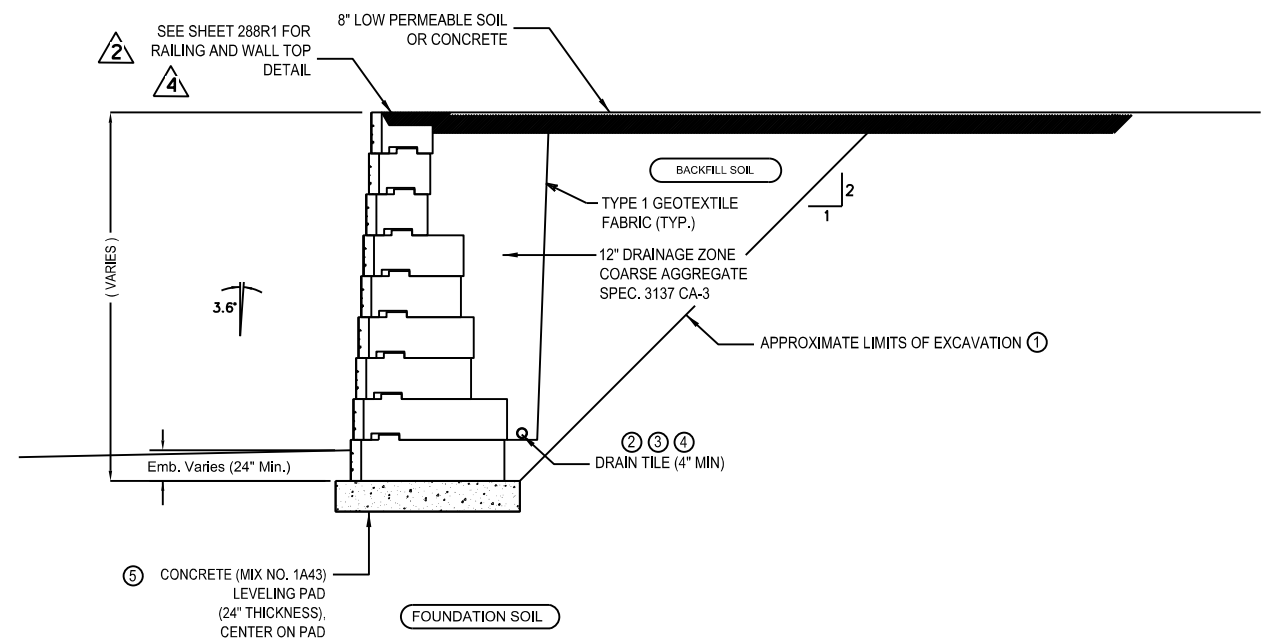
**TYPICAL GEO-GRID ORIENTATION & CURVED WALLS**

NO SCALE



**TYPICAL GEO-GRID WALL CROSS SECTION**

NO SCALE



**TYPICAL GRAVITY WALL CROSS SECTION**

NO SCALE

- ② NOTE ADDED REFERENCING WALL TOP DETAIL
- ④ NOTE REVISED



I HEREBY CERTIFY THAT THIS PLAN WAS PREPARED BY ME OR UNDER MY DIRECT SUPERVISION AND THAT I AM A DULY LICENSED PROFESSIONAL ENGINEER UNDER THE LAWS OF THE STATE OF MINNESOTA.

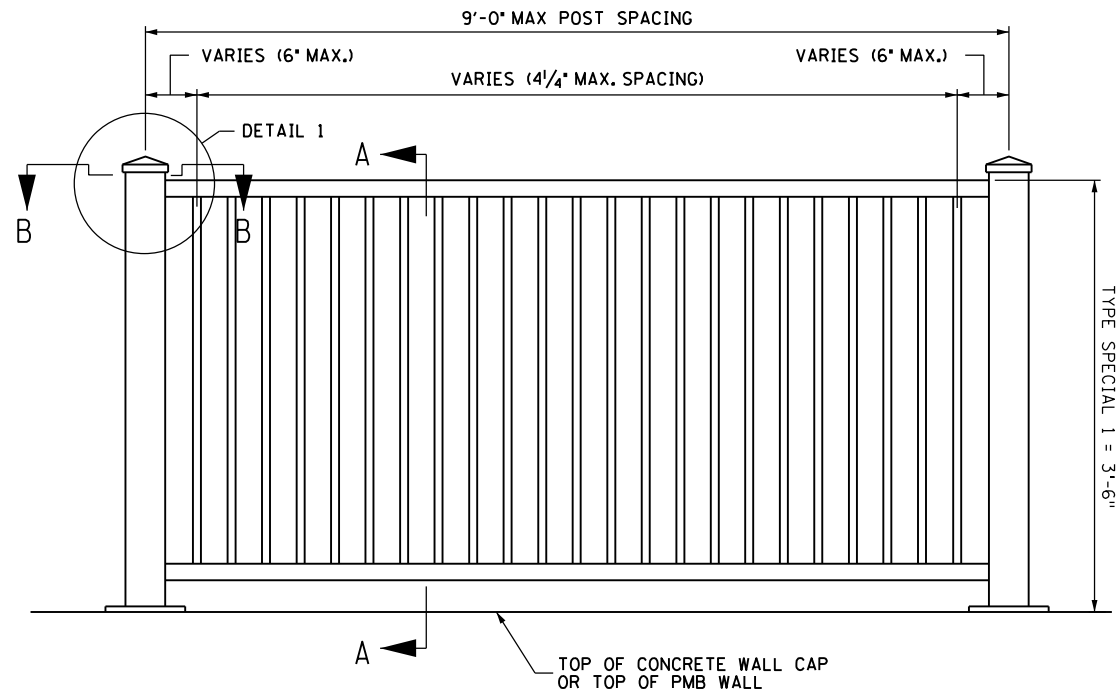
*Nicholas E. Hentges*  
**NICHOLAS E. HENTGES, PROFESSIONAL ENGINEER**

**44620**      **11/21/2014**  
 LICENSE NO.      DATE

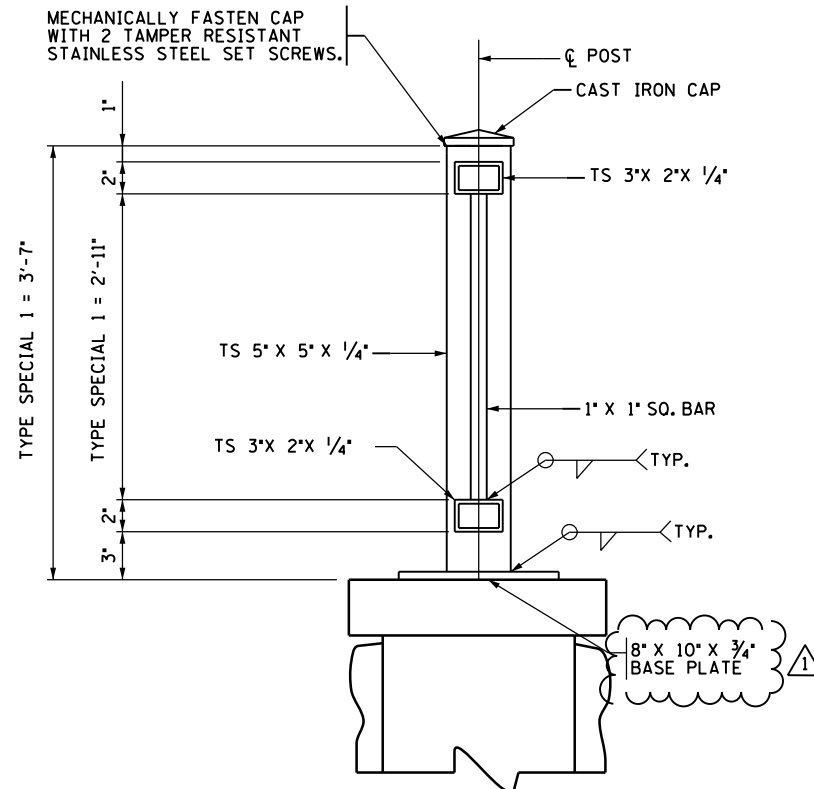
**DESIGN BY:** MJS  
**CAD BY:** MWM  
**CHECKED BY:** NEH  
**LAST REVISION:** 2/9/2015

**RETAINING WALL PLAN - MODULAR BLOCK**  
 C.S.A.H. 101 / HENNEPIN COUNTY PROJECT 9917  
 S.A.P. 142-020-046, 142-159-002,  
 S.A.P. 027-701-019, S.A.P. 027-603-057, CITY PROJECT 12208

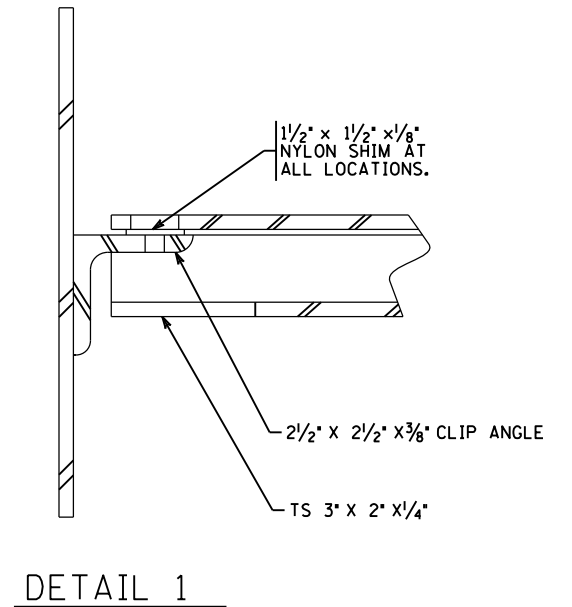
**SHEET**  
**285R1**  
 571



RAILING SPINDLE SPACING

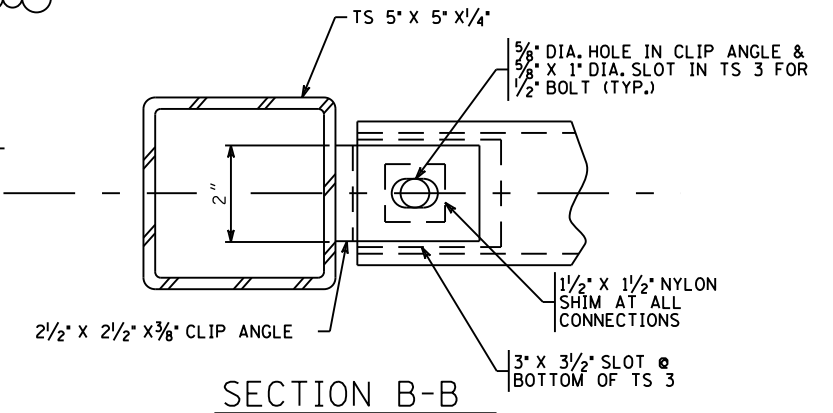


TYPICAL RAILPOST - SECTION A - A



DETAIL 1

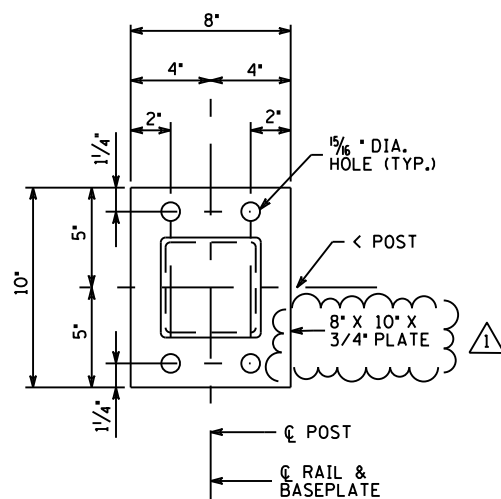
ORNAMENTAL METAL RAILING TYPE SPECIAL 1



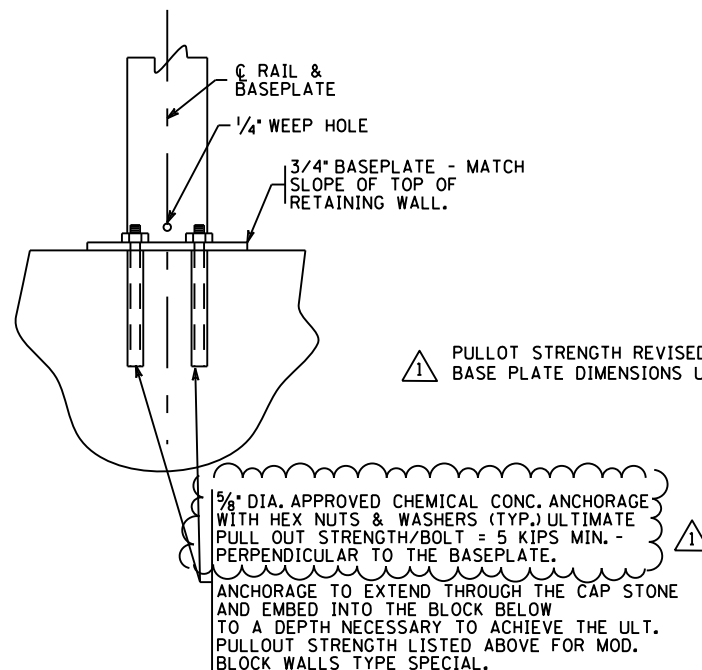
SECTION B-B

GENERAL NOTES:

- ALL STRUCTURAL STEEL TUBING IN THE RAIL SHALL BE A500, GRADE B AND A513, GRADE 2.
  - MATERIAL FOR BASE PLATES AND SPINDLES SHALL CONFORM TO SPEC. 3306.
  - FASTENERS SHALL BE PER 3391 AND SHALL BE TAMPER RESISTANT MECHANICALLY GALVANIZED PER ASTM B695 CLASS 50.
  - GALVANIZE ALL OTHER STRUCTURAL STEEL PER SPEC. 3394 AFTER FABRICATION.
  - VENT HOLES SHALL BE DRILLED IN THE RAIL POST BASE AND THE RAIL TUBES AS NECESSARY TO FACILITATE GALVANIZING.
  - RAIL POSTS AND PICKETS SHALL BE SET VERTICAL.
  - ☉ OF ANCHORAGE SHALL BE 6" MIN. FROM DEFLECTION JOINTS AND ENDS OF WALLS.
  - THE CONNECTION AT ONE END OF EACH PANEL SHALL ALLOW FOR EXPANSION.
  - THE RAILING BASE PLATES AND PROTRUDING PORTIONS OF BOLTS, NUTS AND WASHERS SHALL BE PAINTED IN ACCORDANCE WITH THE SPECIAL PROVISIONS.
  - THE LENGTH OF METAL RAILING FOR PAYMENT SHALL BE A HORIZONTAL LENGTH MEASURED FROM END OF RAILING TO END OF RAILING.
  - RAILING SHALL BE GROUNDED WITH 5/8" DIA. COPPER ROD AS PER SPEC. 2557.
  - FOR RAILING ANCHORAGE REQUIREMENTS SEE THE SPECIAL PROVISIONS.
  - FOR RAIL COATING SEE THE SPECIAL PROVISIONS.
- ⚠️ CAP STONE MUST BE ADHERED TO THE BLOCK BENEATH IT. FRONT AND BACK BLOCK FACES THAT ARE EXPOSED MUST BE TEXTURED.

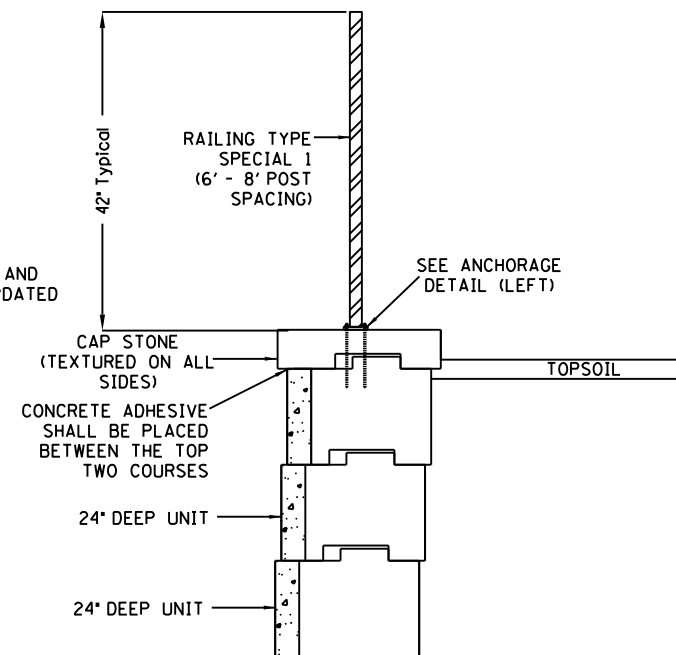


BASE PLATE DETAIL



NOTE:  
IF REINFORCEMENT IS HIT WHEN DRILLING FOR ANCHORAGES MOVE POST SLIGHTLY AND REDRILL. ALTERNATE DIRECTION OF MOVEMENT SO THAT OVERALL RAIL LENGTH COMES OUT THE SAME.

ANCHORAGE DETAIL



RAILING DETAIL (PMB WALL)



I HEREBY CERTIFY THAT THIS PLAN WAS PREPARED BY ME OR UNDER MY DIRECT SUPERVISION AND THAT I AM A DULY LICENSED PROFESSIONAL ENGINEER UNDER THE LAWS OF THE STATE OF MINNESOTA.

NICHOLAS E. HENTGES, PROFESSIONAL ENGINEER

44620 11/21/2014  
LICENSE NO. DATE

DESIGN BY: MJS  
CAD BY: MWM  
CHECKED BY: NEH  
LAST REVISION: 2/9/2015

RETAINING WALL PLAN - RAILING DETAIL

C.S.A.H. 101 / HENNEPIN COUNTY PROJECT 9917  
S.A.P. 142-020-046, 142-159-002,  
S.A.P. 027-701-019, S.A.P. 027-603-057, CITY PROJECT 12208

SHEET

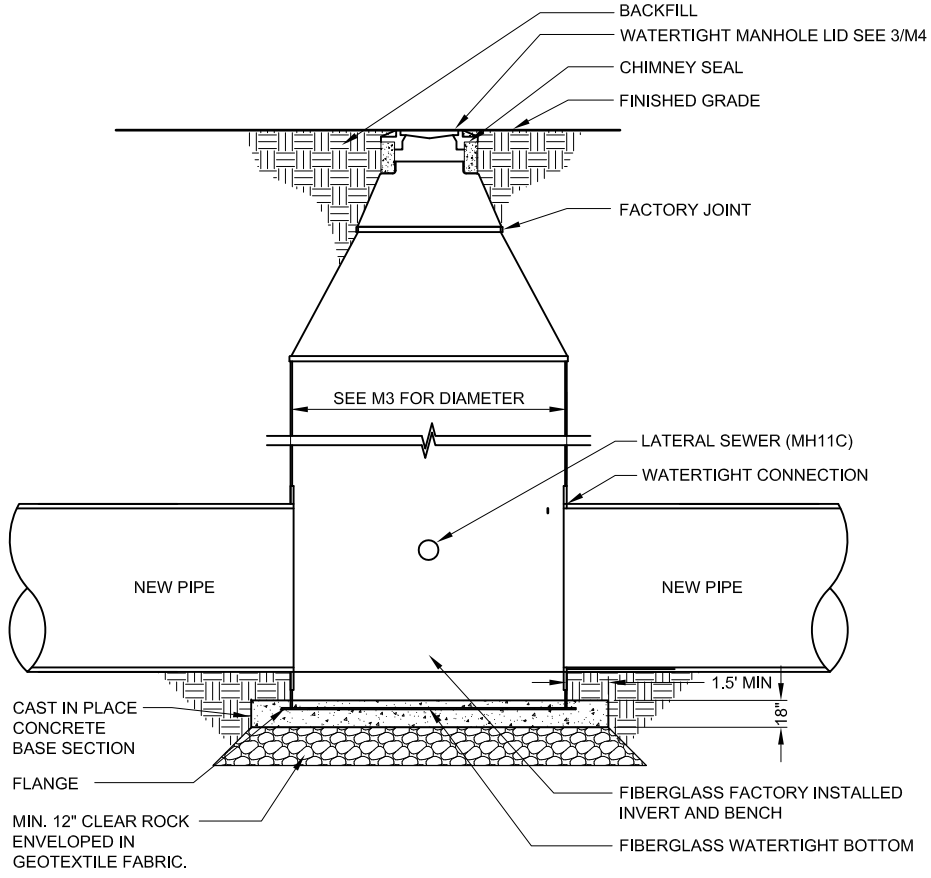
288R1

571

0:\2014\0066\04\CAD\809068\SHEETS\M0004.dwg

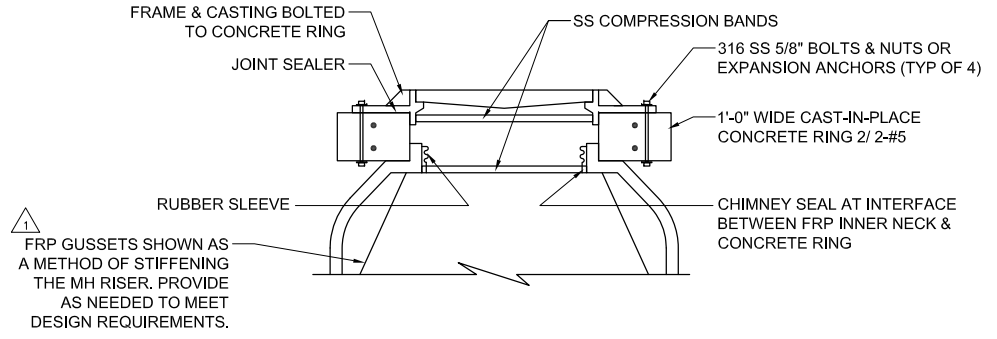
1  
M4R

**NOT USED**  
NO SCALE



2  
M4R

**POLYMER/FRP MH**  
NO SCALE



3  
M4R

**WATERTIGHT MH LID**  
NO SCALE

NO	DATE	BY	REVISIONS	REMARKS
1	02/10/15	KJA	ADDENDUM #1	
2	11/21/14	KJA	ISSUED FOR BIDDING	

DESIGNED	ARS
DRAWN	JJC
CHECKED	KJA

I HEREBY CERTIFY THAT THIS PLAN, SPECIFICATION, OR REPORT WAS PREPARED BY ME OR UNDER MY DIRECT SUPERVISION AND THAT I AM A DAILY LICENSED PROFESSIONAL UNDER THE LAWS OF THE STATE OF MINNESOTA.

SIGNATURE: *Keith J Anderson*  
 TYPED OR PRINTED NAME: KEITH J ANDERSON  
 DATE: 11/21/14 REG NO: 14244



PROJECT	809068	INTERCEPTOR 7016 HWY 101 CROSSING
FILE NAME	M0004	DETAILS
		C.S.A.H. 101 / HENNEPIN COUNTY PROJECT 9917 S.A.P. 142-020-046, 142-159-002 S.A.P. 027-701-019, S.A.P. 027-603-057, CITY PROJECT 12208

M4R

0:\2014\0066\04\CAD\809068\SHEETS\M0004.dwg  
 PLOTTED: 2/10/2015 3:41:37 PM  
 MODIFIED: 2/10/2015 3:42:02 PM